



Universal Electric Motors

COOLING MOTOR CATALOGUE



WE DO MOTORS BEST.





Ultimate Truck Stock Motor™

Features:

- Suitable for Evaporator & Condenser Applications
- IP66 Water Tight with all angle Moisture Protection
- High Efficiency (up to 65%)
- Includes Plug, Speed Nut, Rubber Isolator
- Universal Mounting
- UL/CUL Approved
- Aluminum Frame
- Thermally Protected
- Robust Ball Bearing System
- Replaces: Hussmann, Copeland, Tecumseh, Hill, Tyler, Kysor, Crystal Tips & More..

4 to 25 Watts!



▲ Std 3-hole style
■ Hussmann 4-hole



Dual Side Bosses

Refrigeration ECM



#Stock	Encl.	Watts	Volts	Amps.	RPM Range	Bearings	Shaft	Rotation
EC5411E	IP66	4 - 25	115	0.20 - 0.75	1550 - 1775	Ball	Hubless	CWOSE
EC5412E	IP66	4 - 25	115	0.20 - 0.75	1550 - 1775	Ball	Hubless	CCWOSE
EC5414E	IP67	4 - 25	115-230	0.15 - 0.75	1550 - 1650	Ball	Hubless	CWOSE

Cross Reference

	Rotom	Morrill	Century
EC541	04-R6711, 04-R6811 04-R9211, 04-R5444	5R016, 5R024, 5R025, 5R020, 5R021	9207F2, 9208F2 9211, 9212, 9213
EC5412	Not Available	Not Available	Not Available

Kit Sold Separately



Kit 58

EC5411
EC5412

Replaces 51 Frame

Converts 2-pin Straight to 2-pin 90 Degree



Part No. 2117

Thinking ECM - Think UEM; Your OEM motor Replacement Headquarters

In Stock Solutions for all your ECM Motor Requirements



KryoT M Fortress

Endura® Pro

PerfectSpeed®

Arktic® SSC

KryoTM SSC

EON® 42



ICE 59

PIKA

EON



X13®

142R

Endura®

Arktic® 59

SelecTech®



Evergreen®

Arktic® 142

Nidec

UltraTech®

ECM 2.3



ECM 3.0



Features:

- Stainless Steel shaft
- Class 'A' Insulation,
- Standard 4 Bolt 10-32 Mounting Studs Each End
- Robust Ball Bearing System
- Aluminum Low Profile Frame
- UL/CUL Approved
- Includes 18" to 27" Cord & 2-Pin Plug
- Operating IP67 Water Tight with all angle Moisture Protection
- Dual Voltage: No Connection Change Required



EC5407E - EC5408E



EC5409E



Formerly Emerson Motors

Refrigeration ECM

Stock #	Encl.	HP	Volts	Amps.	RPM	Shaft	Rotation	Replaces
EC5407E	TEAO	1/15 - 1/25	115 - 230	0.40 - 0.67	1550/1625	5/16" x 2.00"	CWSE	-
EC5408E	TEAO	1/15 - 1/20 - 1/25	115 - 230	0.65 - 1.20	1550/800	5/16" x 2-1/2"	REV	5100,5101
EC5409E	TEAO	1/25 - 1/15	115 - 230	0.72 - 0.50	1550/775	Hubless	CCWOSE	-

Features:

- Up to 70% Efficiency
- Mounting Shroud & Fan Guard Mounting With Four Extended M4 Threaded Thru-Bolts on Motor Shaft Side
- Reduce Inventories, One Motor Covers 4W Through 16W Applications
- Energy & Cost Saving, Payback In Less Than One Year
- CO² Reduction, Eco-Friendly Technology
- ECR Motors Are Ideal For Retrofit & New Installations
- Clockwise Opposite Shaft End Rotation, 19" Sleeved Leads With 2 Pin Plug Rear Mounting With Three Standard 8-32 UNC Threaded Holes
- Foot Mounting With 4 Threaded 8-32 UNC Holes
- Universal Hubless Shaft Accommodates Standard Axial Fan Blades
- Moisture & Humidity Resistant
- Input Voltage Range For ECR161 Motor Is 90V...140V
- Operating Temperature Range of -10°C to +40°C (14°F to 104°F)
- Fully Enclosed, Long Life Ball Bearings



Refrigeration ECM



Stock #	Encl.	Watts	Volts	Amps.	RPM	Shaft	Rotation	Replaces
5R018	TEAO	38	230	0.45	1550	1/4" x 20" Thread	CCWSE	-
5R023	TEAO	38	230	0.45	1550	1/4" x 20" Thread	CCWSE	-

Features:

- Open Fan Cooled
- Shaded Pole Design
- Sleeve and Ball Bearings



All Other Models



D470 - D473



SS671 - SS672



SS1332



671B - 672B



SS981

G.E. 11 Frame Replacements



Stock #	Encl.	HP	Volts	Amps.	RPM	Shaft	Rotation	Replaces
D473	O.F.C.	1/20	115	2.00	1550	5/16" x 2.00"	CWOSE	GE-1331
D472	O.F.C.	1/20	115	2.00	1550	5/16" x 2.00"	CCWOSE	GE-1341
D470	O.F.C.	1/20	208-230	1.00	1550	5/16" x 2.00"	CCWOSE	GE-1342
D471	O.F.C.	1/20	208-230	1.00	1550	5/16" x 1-1/4"	CWOSE	GE-1016
9664	O.F.C.	1/20	208-230	1.00	1550	5/16" x 2.00"	CWOSE	GE-1332
SS1332 ●	O.F.C.	1/20	208-230	1.10	1550	5/16" x 2.00"	CCWSE	GE-1332
SS671 ●	O.F.C.	1/15	115/208-230	2.10/1.10	1550	5/16" x 2.00"	CCWSE	GE-1231
SS672 ●	O.F.C.	1/15	115/208-230	2.10/1.10	1550	5/16" x 2.00"	CWSE	GE-1441
9665	O.F.C.	1/15	208-230	1.00	1550	5/16" x 1-1/4"	CWOSE	GE-1232
D671B ●	O.F.C.	1/15	115/208-230	2.10/1.10	1550	5/16" x 2.00"	CWOSE	GE-1231
D672B ●	O.F.C.	1/15	115/208-230	2.10/1.10	1550	5/16" x 2.00"	CCWOSE	GE-1441
SS981	O.F.C.	1/15	460	0.60	1550	5/16" x 2-1/2"	CCWSE	810F050B

Pedestal Fan Air Circulator Motors

Features:

- Yoke Mount - Extended Through Bolts
- Totally Enclosed, Air Over
- Thermally Protected
- Pull Chain
- 10' Cord & Plug
- 40°C Ambient
- Sealed Ball Bearings



All Models

48 Frame - Two Speed



Stock #	Encl.	HP	Volts	Amps.	RPM	Shaft	Rotation	Replaces
SS486 ●*	T.E.A.O.	1/4	115	3.40	1100 / 2	1/2" x 3.00"	REV.	General Replacement
SS647 ●*	T.E.A.O.	1/3	115	4.40	1100 / 2	1/2" x 3.00"	REV.	General Replacement

(●) Ball Bearing

Features:

- Shaded Pole Design
- Cast Iron Construction
- Totally Enclosed



All Models

Unit Bearings

OMNIDRIVE®

Stock #	Encl.	Watts	Volts	Amps.	RPM	Shaft	Rotation	Replaces
SS5211	T.E.	4	115	0.29	1550	Hubless	CWLE	EE5211
SS5311	T.E.	6	115	0.40	1550	Hubless	CWLE	EE5311
SS5411	T.E.	9	115	0.55	1550	Hubless	CWLE	EE5411
SS5611	T.E.	9	115	0.55	1550	Hubless	CWLE	EE5611
SS5811	T.E.	16	115	1.00	1550	Hubless	CWLE	EE5811

Features:

- Shaded Pole Design
- Cast Iron Construction
- Open Enclosure



250 - 252 - 254 - 256



258 - 260



276

Unit Bearings

Century®

Formerly A.O. Smith Electrical Products Company

Stock #	Encl.	Watts	Volts	Amps.	RPM	Shaft	Rotation	Replaces
250	O.O.S.E.	25	115	1.10	1500	Hubless	CWLE	R2511
252	O.O.S.E.	25	230	0.60	1500	Hubless	CWLE	R2512
254	O.O.S.E.	35	115	1.40	1500	Hubless	CWLE	R3511
256	O.O.S.E.	35	230	0.70	1500	Hubless	CWLE	R3512
258	O.O.S.E.	50	115	1.70	1500	3/8" x 1-1/2"	CWLE	R5011
260	O.O.S.E.	50	230	0.85	1500	3/8" x 1-1/2"	CWLE	R5012
276	O.S.E.	50	230	0.85	1500	5/16" x 2-1/2"	CCWLE	R5122

Features:

- Impedance or Thermally Protected
- Continuous Duty, Air Over
- Mechanically Reversible
- Class 'B' Insulation



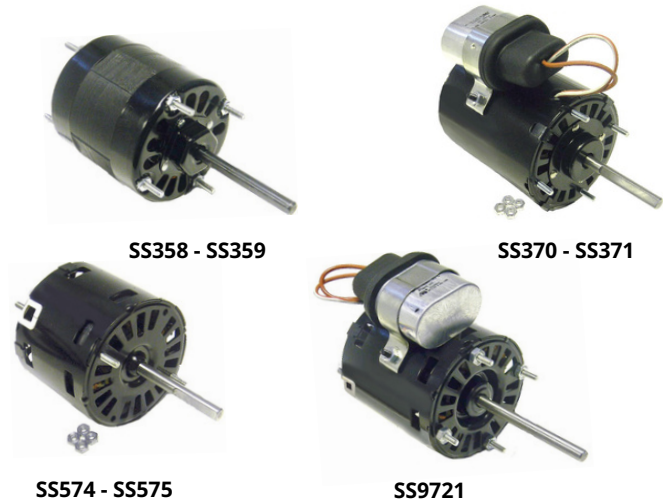
'C' Frame Skeleton®

OMNIDRIVE®	Stock #	Stack	Volts	Amps.	RPM	Shaft	Rotation	Replaces
	K670	5/8	120	0.61	3000	3/16" x 1-3/10"	CCWSE	--
	K672	5/8	240	0.29	3000	3/16" x 1-3/10"	CCWSE	--
	K1575	5/8	115	0.34	3000	0.181" x 1.494"	CCWSE	--

Evaporator Fan Motors

Features:

- Open & Totally Enclosed Construction
- Shaded Pole & P.S.C. Design
- Sleeve and Ball Bearings



3.3" Diameter

OMNIDRIVE®	Stock #	Encl.	HP	Volts	Amps	RPM	Shaft	Rotation	Replaces
	SS358	OPEN	1/20	115	2.00	1550	5/16" x 3.20"	CWSE	R358
	SS359	OPEN	1/20	230	1.10	1550	5/16" x 3.20"	CWSE	R359
	SS370 ●*	OPEN	1/20	115	0.80	1550	5/16" x 2.80"	CCWSE	R370
	SS371 ●*	OPEN	1/20	230	0.30	1550	5/16" x 2.80"	CCWSE	R371
	SS9721 ●*	OPEN	1/12	115/208-230	1.10 / 0.60	1550	5/16" x 3.15"	REV.	R90721

(●)Ball Bearing (*) P.S.C. Design



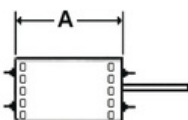
Ultimate Truck Stock Motor™

Features:

- High Efficiency P.S.C. Design
- Uses Over 40% Less Electricity than Shaded Pole Designs
- Four 8-32 x 3/4" Stud Extensions at each end
- Automatic Reset Thermal Overload Protector
- Capacitor Included
- Reversing Leads
- Ball Bearings have all Angle Thrust System
- 15" Cord & Plug (0.250" pin pitch) Includes Adapter for 0.375" pin pitch



All Models



3.3" Diameter

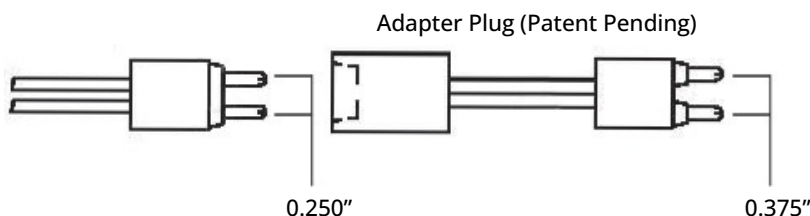


Stock #	Encl.	HP	Volts	Amps	RPM	"C" Dim.	Shaft	Rotation
EM-9662 ●*	OPEN	1/20	115	0.85	1550	3.26"	5/16" x 3.00"	REV.
EM-9656 ●*	OPEN	1/15	208-230	0.48	1550	3.78"	5/16" x 3.00"	REV.
EM-9657 ●*	OPEN	1/10	230	1.00	1550	8.25"	5/16" x 3.00"	REV.

Cross Reference

	Rotom	Bohn Century	Fasco
EM-9662	R90721, R358, R1052, R368 R90572, R90574	5001L, 5008S, 5004L574A, 574 5034L, 5034LS, 5008SS	D1124, D1101
EM-9656	R90721, R359, R1053, R369 R90573, R90575, R91125	7190-0442, 25309101573A, 575 5008T, 5034M, 5034MS 5008TS	D1126, D1125, D1103 D1122, D1123

	Blanchard-Ness	Larkin Packard	Ref Plus
EM-9662	E1052	253-1194, 2530910141101, 41154, 45036 7163-2113, JA2N015N41124, 45008S, 49101	RMT0011
EM-9656	E1053	253-1195, 2530910141103, 41195, 41126 7163-3371, 7163-213545008T, 41125, 49101 JA2N016N	RMT0012



Features:

- Shaded Pole Design
- Sleeve Bearings
- Replacements for Reversomatic & Intercity



SS2609 - SS2612

OEM Replacements

OMNIDRIVE®

Stock #	Encl.	HP	Volts	Amps.	RPM	Shaft	Rotation	Replaces
SS2609	T.E.	1/30	115	1.21	1550	1/2" x 2.35"	CCWSE	R2609
SS2612	T.E.	1/30	115	1.21	1550	1/2" x 2.35"	CWSE	R2612

Fan Coil Motors

Features:

- P.S.C. Design
- Capacitor Included
- Sleeve Bearings
- Replacements for Temspec, Unilux, Climetec & Snyder-General



All Models

42 & 48 Frame

OMNIDRIVE

Stock #	Encl.	HP	Volts	Amps.	RPM	Shaft	Rotation	Replaces
SS799 *	OPEN	1/8	115	2.10	1000/5	1/2" x 5.00"	CWSE	DD-029
SS2799 *	OPEN	1/6	115	2.60	950/5	1/2" x 4.40"	CWSE	DD-030

(*) P.S.C. Design



ECM Fan Coil Replacement

Features:

- Energy Efficient ECM Technology
- ECM with Internal Control
- Up to 65% Efficiency vs. Low Efficiency Shaded Pole
- Rotors are Isolated from Shaft to Reduce Motor Vibration
- Saves an Average of 69% on Energy Usage
- Double Shaft
- Open Construction
- Resilient Base
- 54" Leads
- Runs Cooler
- Easy to Install
- Long Life Ball Bearings

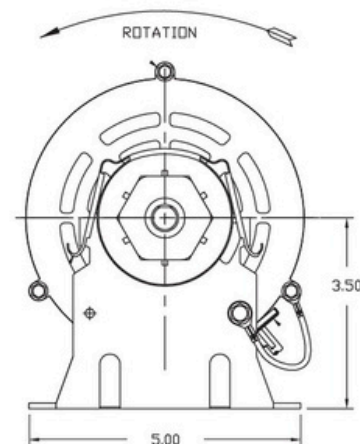
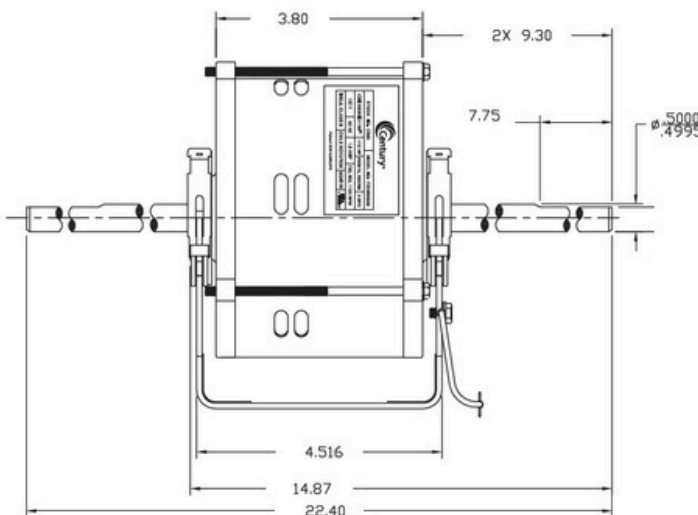


42 Frame ECM



Stock #	Encl.	HP	Volts	Amps.	RPM	Shaft	Rotation
CS89 ●	OPEN	1/10	115	1.56	1100/3	9.30" x 1/2" x 9.30"	CWLE

Replaces many Shaded Pole & P.S.C. Motors
In Fan Coil, PTACS & Air Conditioners



Features:

- Shaded Pole & P.S.C. Design
- Open & Totally Enclosed
- 60 Hz
- Sleeve Bearings
- Thermally Protected



EC6W115 - EC9W115
EC16W115 - EC16W230
EC34W115 - EC34W230



RMT0004E - RMT0005E



Stock #	Watts	HP	Volts.	Amps.	RPM	Shaft	Rotation
EC9W115	6	---	115	0.41	1550	Hubless	CCWSE
EC9W115	9	---	115	0.58	1550	Hubless	CCWSE
EC16W115	16	---	115	0.89	1550	Hubless	CCWSE
EC16W230	16	---	230	0.50	1550	Hubless	CCWSE
EC34W115	34	---	115	1.60	1550	Hubless	CCWSE
EC34W230	34	---	230	0.80	1550	Hubless	CCWSE
RMT0004E •	34	---	115	1.60	1550	Hubless	CCWSE
RMT0005E •	34	---	230	0.80	1550	Hubless	CCWSE

Fan Coil Motors



42 Frame

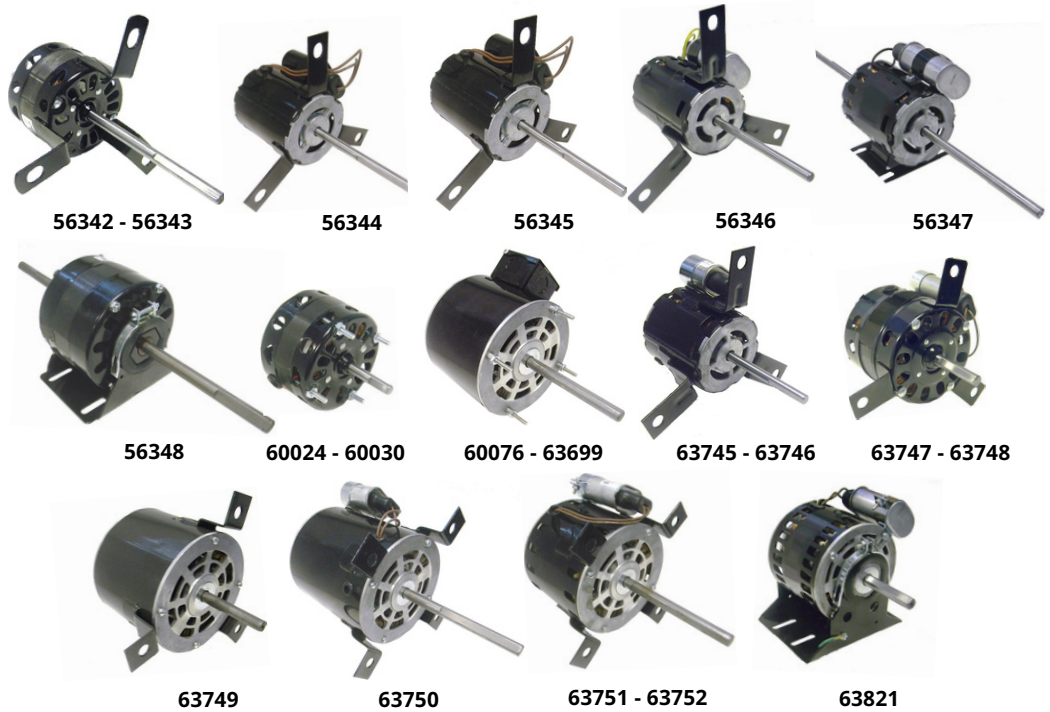


Stock #	Encl.	HP	Volts.	Amps.	RPM	Shaft	Rotation
381 *	OPEN	1/10	208-230	0.81	1075/3	10-11/16" x 1/2" x 10-11/16"	DBL
EM-1090	OPEN	1/15	115	0.80	1100/3	9.70" x 1/2" x 9.70"	CWLE
945A *	OPEN	1/8	115	1.20	1500/3	9"1/2" x 7-1/2"	DBL
UE955 *	OPEN	1/6	115	2.30	1500/3	10-1/2" x 1/2" x 10-1/2"	DBL
954 *	OPEN	1/30	115	0.60	1100/3	1/2" x 8-1/2"	CCWSE
SS9608 *	OPEN	1/20	115	0.60	1100/3	1/2" x 9-1/2"	REV
SS362 *	OPEN	1/10	115	1.80	1050/4	10-1/2" x 1/2" x 10-1/2"	DBL
SS362S *	OPEN	1/10	115	1.80	1050/4	10-1/2" x 3/8" x 10-1/2"	DBL

(•) Ball Bearing (*) P.S.C. Design

Features:

- Shaded Pole & P.S.C. Design
- Capacitor Included
- Open Air-Over Design
- Wiring Harness w/Plug Supplied
- Long Life Self Aligning Sleeve & Sealed Ball Bearings



OEM Replacements



Stock #	Diameter	HP	Volts	Amps.	RPM	Shaft	Rotation	Replaces
56342	3.3"	1/70	115	1.00 / 0.50	1550/2	3/8" x 5-1/2"	CWSE	56342-0
56343	3.3"	0.27	115	1.32	1550/2	3/8" x 5-3/4"	CWSE	56343-0, JA2M414
56344 ●*	3.3"	0.08	115	1.60 / 1.00	1550/2	3/8" x 4.75"	CWSE	56344-0, JE2H047
56345 *	3.3"	1/25	115	1.00	1050	3/8" x 4.75"	CWSE	56345-0
56346 ●*	3.3"	0.27	115	3.20 / 1.90	1550/2	3/8" x 5.50"	CWSE	56346-0, JE2K007
56347 ~*	3.3"	1/12	115	1.60	1050	6.10" x 3/8" x 6.10"	CCWLE	56347-0
56348 ~	5.0"	1/10	115	3.90	1050	6-1/4" x 1/2" x 6-1/4"	CCWLE	56348-0
60024	3.3"	1/30	115	1.40	1550	5/16" x 1-1/2"	CWSE	60024-0
60030	3.3"	1/80	115	0.74	1400	1/4" x 1-3/4"	CWSE	60030-0
60076 ●*	5.5"	1/6	115	3.40	1300/2	1/2" x 2.65"	CWSE	60076-0
63699 ●*	5.5"	1/4	115	3.40	1725	1/2" x 4.77"	CWSE	63699-0
63745 *	3.3"	1/30	115	0.50 / 0.40	1550/2	3/8" x 3.69"	CWSE	63745-0
63746 ●*	3.3"	1/12	115	1.50 / 0.90	1550/2	3/8" x 3.40"	CWSE	63746-0, JE2H057
63747 *	4.4"	1/7	115	2.50	1550/3	1/2" x 2.20"	CWSE	63747-0
63748 *	4.4"	1/6	115	1.80	1550/3	1/2" x 2.60"	CWSE	63748-0
63749 ●*	5.5"	1/4	115	2.80	1725	1/2" x 3.00"	CWSE	63749-0
63750 ●*	5.5"	1/3	115	4.00	1550/3	1/2" x 5.55"	CWSE	63750-0
63751 ●*	5.5"	1/2	120	5.00	1650/2	1/2" x 5.50"	CWSE	63751-0
63752 ●*	5.5"	3/4	115	8.60 / 9.60	1625	1/2" x 5.33"	CWSE	63752-0
63821 ●*	5.0"	1/4	115	2.70	1550	1/2" x 2.60"	CCWSE	63821-0



Ultimate Truck Stock Motor™

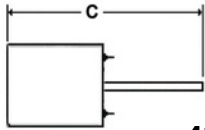
Features:

- High Efficiency P.S.C. Design
- EZ-FIT® Mounting System to Cover 4.3", 4.4" or 4.6" Bolt Circle Mounts
- High 70°C (158°F) Ambient Design
- Automatic Reset Thermal Overload Protector
- Designed for Use with 370V Capacitors
- Special Treated Rotor For Corrosion Protection
- Totally Enclosed, Air Over (TEAO)
- Continuous Duty, Air Over
- Extended Mounting Studs
- Reversible Rotation
- 36" Leads
- Ball Bearings

70°C Ambient



All Models



42 Frame



Stock #	Encl.	HP Range	Volts	Amps.	RPM	"C" Dim.	Shaft	Rotation
EM-5440H ●*	T.E.	1/8 - 1/12	208-230	0.80	1075	8.00"	1/2" x 3.00"	REV.
EM-5441H ●*	T.E.	1/4 - 1/6	208-230	1.50	1075	8.50"	1/2" x 3.00"	REV.
EM-5442H ●*	T.E.	1/4 - 1/6	208-230	1.60	1625	8.50"	1/2" x 3.00"	REV.

Cross Reference

	Rotom *	Genteq *	A.O. Smith *	Fasco *
EM-5440H	M4-R2722	2S005, 2251	9722	G2243, G2248, G2249
EM-5441H	M4-R2723	2S003, 2250	9723	G2247, G2246, G2244, G2245
EM-5442H	M4-R2724	N/A	9724	N/A

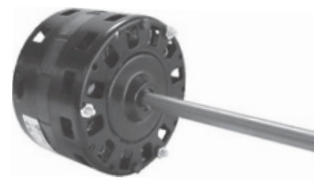
(*) These motors are rated 60°C Ambient



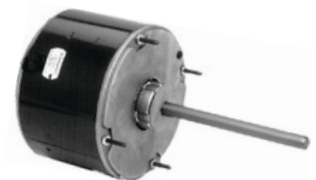
EZ-FIT® Motor Mounting Bracket
Assembled out of the box to use as a clam shell replacement. Easily adapts to a 4.4" or 4.6" bolt circle for other applications



**Clam Shell
4.3" Bolt Circle**



**3 Pc
4.4" Bolt Circle**

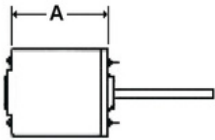


**3 Pc
4.6" Bolt Circle**



Features:

- Single Phase P.S.C.
- Totally Enclosed, Air Over
- Reversible Rotation
- Automatic Overload
- Ball Bearings



60°C Ambient



208-230V - 1075 RPM

OMNIDRIVE®

Stock #	Encl.	HP	Volts	Amps.	RPM	"A" Dim.	Shaft	Rotation	Replaces
SS3727 ●	T.E.A.O	1/6	208-230	1.10	1075	3.86"	1/2" x 6.00"	REV.	CF-3726, 3727
SS3728 ●	T.E.A.O	1/4	208-230	2.00	1075	4.11"	1/2" x 6.00"	REV.	CF-3732, 3732
SS3729 ●	T.E.A.O	1/3	208-230	2.50	1075	4.61"	1/2" x 6.00"	REV.	CF-3733, 3733
SS3730 ●	T.E.A.O	1/2	208-230	3.40	1075	5.11"	1/2" x 6.00"	REV.	CF-3734, 3734
SS3731 ●	T.E.A.O	3/4	208-230	5.30	1075	5.36"	1/2" x 6.00"	REV.	CF-3735, 3735



460V - 825 RPM

Century®
Formerly A.O. Smith Electrical Products Company

Stock #	Encl.	HP	Volts	Amps.	RPM	"A" Dim.	Shaft	Rotation	Replaces
EM-1880 ●	T.E.A.O	1/4	460	1.00	825	5.10"	1/2" x 6.00"	REV.	---
EM-1881 ●	T.E.A.O	1/3	460	1.00	825	5.60"	1/2" x 6.00"	REV.	3209

575V - 825 RPM

Stock #	Encl.	HP	Volts	Amps.	RPM	"A" Dim.	Shaft	Rotation	Replaces
SS3756 ●	T.E.A.O	1/4	575	0.70	825	4.81"	1/2" x 5.00"	REV.	---
SS3757 ●	T.E.A.O	1/3	575	1.10	825	5.31"	1/2" x 5.00"	REV.	---

575V - 1075 RPM

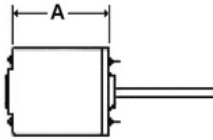
Stock #	Encl.	HP	Volts	Amps.	RPM	"A" Dim.	Shaft	Rotation	Replaces
5FE1036SV1 ●	T.E.A.O	1/3	575	0.80	1100	5.36"	1/2" x 6.50"	REV.	R42604
5FE1056SV1 ●	T.E.A.O	1/2	575	1.20	1100	5.61"	1/2" x 6.50"	REV.	R42606
5FE1076S ●	T.E.A.O	3/4	575	1.90	1075	6.11"	1/2" x 6.50"	REV.	R42607

575V - 1625 RPM

Stock #	Encl.	HP	Volts	Amps.	RPM	"A" Dim.	Shaft	Rotation	Replaces
SS3762 ●	T.E.A.O	1/2	575	1.00	1625	5.30"	1/2" x 6.50"	REV.	R42605, D2750

Features:

- Single Phase P.S.C.
- Totally Enclosed, Air Over
- Reversible Rotation
- Automatic Overload
- Ball Bearings



70°C Ambient



208-230V - 825 RPM

OMNIDRIVE®



Formerly Emerson Motors

Stock #	Encl.	HP	Volts	Amps.	RPM	"A" Dim.	Shaft	Rotation	Replaces
SS7403 ●	T.E.A.O	1/6	208-230	1.10	825	4.11"	1/2" x 6.00"	REV.	3203HS
SS7404 ●	T.E.A.O	1/4	208-230	1.40	825	4.68"	1/2" x 6.00"	REV.	3204HS
SS7405 ●	T.E.A.O	1/3	208-230	1.80	825	5.11"	1/2" x 6.00"	REV.	3205HS
SS7746 ●	T.E.A.O	1/2	208-230	2.50	825	5.61"	1/2" x 6.00"	REV.	3747HS



Formerly A.O. Smith Electrical Products Company

208-230V - 1075 RPM

Stock #	Encl.	HP	Volts	Amps.	RPM	"A" Dim.	Shaft	Rotation	Replaces
SS7727 ●	T.E.A.O	1/6	208-230	1.10	1075	3.86"	1/2" x 6.00"	REV.	3726HS
SS7728 ●	T.E.A.O	1/4	208-230	2.00	1075	4.11"	1/2" x 6.00"	REV.	3732HS
SS7729 ●	T.E.A.O	1/3	208-230	2.50	1075	4.61"	1/2" x 6.00"	REV.	3733HS
SS7730 ●	T.E.A.O	1/2	208-230	3.50	1075	5.11"	1/2" x 6.00"	REV.	3734HS
SS7731 ●	T.E.A.O	3/4	208-230	5.30	1075	5.36"	1/2" x 6.00"	REV.	3735HS

460V - 1075 RPM

Stock #	Encl.	HP	Volts	Amps.	RPM	"A" Dim.	Shaft	Rotation	Replaces
SS7736 ●	T.E.A.O	1/4	460	1.00	1075	4.74"	1/2" x 6.00"	REV.	3736HS
SS7737 ●	T.E.A.O	1/3	460	1.30	1075	5.24"	1/2" x 6.00"	REV.	3737HS
SS7738 ●	T.E.A.O	1/2	460	1.50	1075	5.61"	1/2" x 6.00"	REV.	3738HS

575V - 1075 RPM

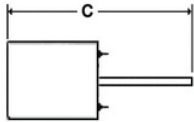
Stock #	Encl.	HP	Volts	Amps.	RPM	"A" Dim.	Shaft	Rotation	Replaces
SS3758 ●	T.E.A.O	1/4	575	0.60	1075	4.31"	1/2" x 5.00"	REV.	---
SS3759 ●	T.E.A.O	1/3	575	0.70	1075	5.31"	1/2" x 5.00"	REV.	---
SS3760 ●	T.E.A.O	1/2	575	0.90	1075	5.56"	1/2" x 5.00"	REV.	---
SS3761 ●	T.E.A.O	3/4	575	1.60	1075	7.31"	1/2" x 5.00"	REV.	---

(●) Ball Bearing



Features:

- Single Phase P.S.C.
- Thermally Protected
- Reversible Rotation
- 36" Leads
- Continuous Duty, Air Over
- Extended Mounting Studs
- High Efficiency Design
- Ball Bearings



60°C Ambient



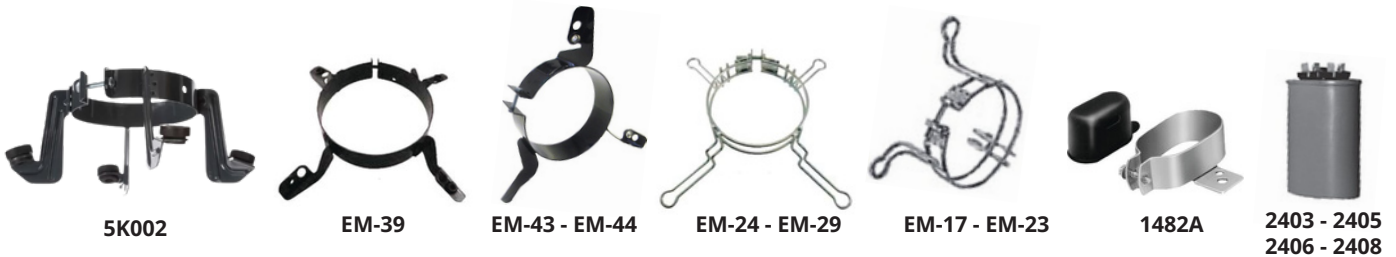
All Models

42 Frame



Stock #	Encl.	HP Range	Volts	Amps.	RPM	"C" Dim.	Shaft	Rotation
9722 ●*	T.E.	1/8 - 1/12	208-230	0.90	1075	7.50"	1/2" x 3.00"	REV.
9723 ●*	T.E.	1/4 - 1/6	208-230	2.00	1075	7.50"	1/2" x 3.00"	REV.
9724 ●*	T.E.	1/4 - 1/6	208-230	1.60	1625	7.50"	1/2" x 3.00"	REV.

Motor Mount Brackets & Capacitors



Accessories

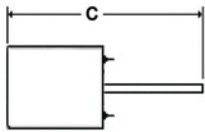
Stock #	Description
EM-43	5" (42 Frame) 9" & 10" B.C.D. 3 Lugs
EM-44	5-5/8" (48 Frame) 9" & 10" B.C.D. 3 Lugs
5K002	5-5/8" (48 Frame) 9" & 10" B.C.D. 4 Lugs
EM-39	5-5/8" (48 Frame) 9" & 10" B.C.D. 4 Lugs
EM-17	Heavy Duty 5-5/8" (48 Frame) 10" B.C.D. 3 Lugs
EM-23	Heavy Duty 5-5/8" (48 Frame) 11" B.C.D. 3 Lugs
EM-24	Heavy Duty 5-5/8" (48 Frame) 15" B.C.D. 4 Lugs
EM-29	Heavy Duty 5-5/8" (48 Frame) 16" B.C.D. 4 Lugs
1482A	Capacitor Mounting Bracket & Rubber Cover
2403	5mfd 370/440V. Oval Case
2405	7.5mfd 370/440V. Oval Case
2406	10mfd 370/440V. Oval Case
2408	15mfd 370/440V. Oval Case



Ultimate Truck Stock Motor™

Features:

- High Efficiency P.S.C. Design
- High 70°C (158°F) Ambient Design
- Automatic Reset Thermal Overload Protector
- Designed for Use With 370V Capacitors
- Special Treated Rotor For Corrosion Protection
- Includes Lead End Mounting Holes For Rheem or Trane Units
- Class 'F' Insulation
- Extended Mounting Studs
- Flat Lead End for Shaft Down Applications
- Reversible Rotation
- Continuous Duty, Air Over
- 48" Leads with Flag Terminals
- Ball Bearings



70°C Ambient



All Models

48 Frame - Two Speed



Stock #	HP Range	Volts	Amps.	RPM	"C" Dim.	Shaft	Rotation
EM-5464H ●*	1/3 - 1/6	208-230	1.90 - 1.00	825/2	10.30"	1/2" x 5.00"	REV.
EM-5462H ●*	1/3 - 1/6	208-230	2.60 - 1.80	1075/2	9.60"	1/2" x 5.00"	REV.
EM-5465H ●*	1/2 - 1/5	208-230	3.00 - 1.30	1075/2	10.30"	1/2" x 5.00"	REV.
EM-5482H ●*	3/4 - 1/4	208-230	4.00 - 1.40	1075/2	11.87"	1/2" x 5.00"	REV.
EM-5480H ●*	1/2 - 1/6	460	1.30 - 0.50	1075/2	11.10"	1/2" x 5.00"	REV.
EM-5481H ●*	3/4 - 1/4	460	2.20 - 0.70	1075/2	11.85"	1/2" x 5.00"	REV.

Cross Reference

Stock #	Rotom	Genteq	Century
EM-5464H	M2-R22601	3457HS, 3459HS	FE6001F
EM-5462H	M2-R22600	3456HS, 3458HS	FE6000F
EM-5465H	M2-R22602	3460HS	FE6002F
EM-5482H	M2-R22604	N/A	FE6003F
EM-5480H	N/A	N/A	N/A
EM-5481H	N/A	N/A	N/A

(●) Ball Bearing (*) P.S.C. Design



Features:

- Open Opposite Shaft-End & Totally Enclosed
- Single Phase P.S.C. & Three Phase
- Round Body & Rigid Base
- Reversible Rotation
- Auto Protection
- Ball Bearings



C770V1 - C081 - C771 - 181574



H564 - H977- H567 - H961
H667 - H962V1 - H767 - H963



UEH962 - UEH686 - UEH699 - UEX526



H978V1



MA1074



181651

56 Frame - Single Phase



Formerly A.O. Smith Electrical Products Company



Stock #	Encl.	HP	Volts	Amps.	RPM	Shaft	Rotation	Replaces
C770V1 ●*	O.O.S.E.	1	200-230 / 460-1Ø	4.80 / 2.40	1075	5/8" x 6.00"	REV.	S1514
C081 ●*	O.O.S.E.	1	575-1Ø	2.20	1075	5/8" x 6.00"	REV.	S1516
C771 ●*	O.O.S.E.	1.5	200-230 / 460-1Ø	6.60 / 3.30	1075	5/8" x 6.00"	REV.	S1518
181574 ●*	O.O.S.E.	1.5	575-1Ø	2.70	1075	5/8" x 6.00"	REV.	S1520

56 Frame - Three Phase

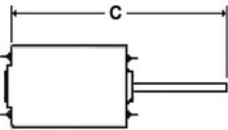


Formerly Emerson Motors

Stock #	Encl.	HP	Volts	Amps.	RPM	Shaft	Rotation	Replaces
H564 ●	O.O.S.E.	1/2	200-230 / 460-3Ø	2.8-2.6 / 1.30	1140	5/8" x 6.00"	REV.	T2532
H977V1 ●	T.E.	1/2	575-3Ø	0.80	1140	5/8" x 3-3/8"	REV.	AICH977
H567 ●	O.O.S.E.	3/4	200-230 / 460-3Ø	2.8-3.0 / 1.50	1140	5/8" x 6.00"	REV.	T2534
H961 ●	O.O.S.E.	3/4	575-3Ø	1.25	1140	5/8" x 6.00"	REV.	T2535
H667 ●	O.O.S.E.	1	200-230 / 460-3Ø	5.3-5.2 / 2.60	1140	5/8" x 6.00"	REV.	T2538
H671 ●	O.O.S.E.	1	575-3Ø	2.00	1140	5/8" x 6.00"	REV.	T2540
UEH686 ●	O.O.S.E.	1	208-230 / 460-3Ø	5.0 / 2.5	850	5/8" x 6.00"	REV.	T2537
H686 ●	O.O.S.E.	1	200-230 / 460-3Ø	4.4-4.0 / 2.00	850	5/8" x 5.00"	REV.	T2537
UEH962 ●	O.O.S.E.	1	575-3Ø	2.10	850	5/8" x 6.00"	REV.	T2539
H962V1 ●	O.O.S.E.	1	575-3Ø	1.60	850	5/8" x 3-1/4"	REV.	T2539
H767 ●	O.O.S.E.	1.5	200-230 / 460-3Ø	5.8-6.0 / 3.00	1140	5/8" x 6.00"	REV.	T2542
H963 ●	O.O.S.E.	1.5	575-3Ø	2.30	1140	5/8" x 6.00"	REV.	T2543
UEH699 ●	O.O.S.E.	2	208-230 / 460-3Ø	7.8 / 3.90	1140	5/8" x 6.00"	REV.	T2544
H978V1 ●	O.O.S.E.	SPL	208-230 / 460/575-3Ø	5.5 / 3.4 / 2.80	1140	5/8" x 3-1/2"	REV.	HD52AK652
MA1074 ●	T.E.	2	575-3Ø	3.10	1140	5/8" x 3.00"	REV.	MA1074
UEX526 ●	O.O.S.E.	2	575-3Ø	2.80	1140	5/8" x 6.00"	REV.	T2536, X526
181651 ●	T.E.	2	575-3Ø	2.70	1140	5/8" x 2-1/2"	REV.	---
UEH977	TEAO	1/2	575	0.85	1140	5/8" x 3-1/3"	REV.	---
UEH961	O.O.S.E.	3/4	575	1.20	1140	5/8" x 6.00"	REV.	---
UEH671	O.O.S.E.	1	575	1.60	1140	5/8" x 6.00"	REV.	---
UEH767	O.O.S.E.	1.5	460/200-230	2.7/5.7-5.4	1140	5/8" x 6.00"	REV.	---

Features:

- Open Opposite Shaft-End
- Inverter Duty
- Class 'F' Insulation
- Automatic Overload
- Energy Efficient
- Reversible Rotation
- Ball Bearings
- Removable Bolt-on Base



70°C Ambient



56 Frame - Three Phase - 208-230/460V

Stock #	Encl.	HP	Volts	Amps.	RPM	"C" Dim.	Shaft	Rotation
H1055AV1 ●	O.O.S.E.	1/2	208-230/460	2.8-2.6 / 1.3	1140	16.09"	5/8" x 6.00"	REV.
H1056AV1 ●	O.O.S.E.	3/4	208-230/460	2.8-3.0 / 1.5	1140	16.20"	5/8" x 6.00"	REV.
H1050AV1 ●	O.O.S.E.	1	208-230/460	4.0-4.4 / 2.2	1140	16.30"	5/8" x 6.00"	REV.
H1051AV1 ●	O.O.S.E.	1-1/2	208-230/460	5.8-5.8 / 2.9	1140	17.32"	5/8" x 6.00"	REV.
H1052AV1 ●	O.O.S.E.	2	208-230/460	7.0-7.4 / 3.7	1140	18.32"	5/8" x 6.00"	REV.
H1053AV1 ●	O.O.S.E.	1	208-230/460	5.0-5.2 / 2.6	850	18.32"	5/8" x 6.00"	REV.
H1054AV1 ●	O.O.S.E.	1-1/2	208-230/460	5.0-5.2 / 2.6	850	18.77"	5/8" x 6.00"	REV.

56 Frame - Three Phase - 575V

Stock #	Encl.	HP	Volts	Amps.	RPM	"C" Dim.	Shaft	Rotation
5H1050AV1 ●	O.O.S.E.	1	575	2.00	1140	16.30"	5/8" x 6.00"	REV.
5H1051AV1 ●	O.O.S.E.	1-1/2	575	2.40	1140	17.30"	5/8" x 6.00"	REV.
5H1052AV1 ●	O.O.S.E.	2	575	3.00	1140	18.30"	5/8" x 6.00"	REV.
5H1053AV1 ●	O.O.S.E.	1	575	1.80	850	18.30"	5/8" x 6.00"	REV.
5H1054AV1 ●	O.O.S.E.	1-1/2	575	3.00	850	18.78"	5/8" x 6.00"	REV.

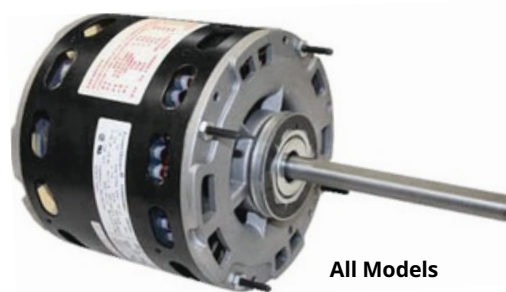


(●) Ball Bearing

MULTI-HP RATED MOTORS

Features:

- P.S.C. Design
- Energy Efficient
- Resilient Rings
- 40°C Ambient
- Reversible Rotation
- Open Construction
- Class 'B' Insulation
- Extended Thru Bolts
- Rheem Mounting Holes in Shell
- Sleeve and Ball Bearings



All Models

48 Frame - Four Speed

OMNIDRIVE®

Stock #	Encl.	HP	Volts	Amps.	RPM	Shaft	Capacitor
SS3463 *	OPEN	1/2	115	7.00	1075/4	1/2" x 5.00"	10/370, 7.5/370
SS3464 *	OPEN	1/2	208-230	3.90	1075/4	1/2" x 5.00"	5/370
SS3466 *	OPEN	3/4	115	9.10	1075/4	1/2" x 5.00"	5/370
SS3467 *	OPEN	3/4	208-230	3.90	1075/4	1/2" x 5.00"	5/370

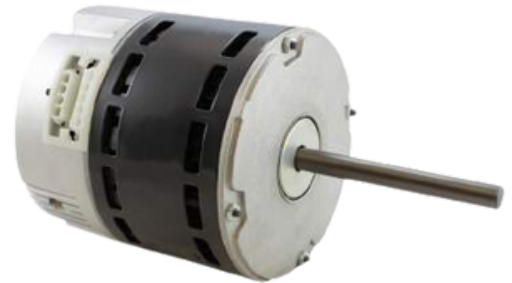
Cross Reference

Century	Emerson	Genteq	Marathon	Fasco	Rotom
FDL6001A	5460	3463	X077	D2835	R43600
FD6000A	5461	3464	X073	D833	R43601
FDL6002A	5470	3466	X074	D2832	R43602
FD6001A	5471	3467	X075	D2833	R43603

RESCUE PerfectSpeed®

The PERFECTSPEED® EC Motor system is the solution to meet the increasing demand for electrically commutated motors (ECM) in modern HAC and ventilation systems.

- Up to 82% efficient, 30% better than common PSC motors
- Robust, integrated electronics with advanced thermal and overload protection
- Full communicating control via the ClimateTalk™ communication protocol
- Range of analog inputs and controls, including PWM and 0-10V
- Advanced programming software reduces development and testing
- Ready to go out of the box



SPECIFICATIONS

HORSEPOWER: 1/3, 1/2, 3/4 and 1 HP

VOLTAGE: 1Ø, 115, 208-230 Vac

SPEEDS: Programmable (1200/Var & 1800/Var)

ROTATION: Programmable (CCW or CW)

INPUTS: 24Vac, Tap Inputs

HERTZ: 50/60 Hz

OPERATION MODE: Constant Torque

FRAME: NEMA 48

ENCLOSURE: Open Air Over (OAO)

EFFICIENCY: Up to 82%

MOUNTING: Belly-band

#Stock	HP	Volts	Freq.	Amps.	RPM	Rotation	Dim. A	Dim. B	Dim. C
EM-8620PS	1/3	115/208-230	60 & 50	4.7/3.0-2.8-2.4 & 4.6/3.0-2.8-2.4	1200/Var	REV	3.662	10.725	2.563
EM-8420PS	1/3	115/208-230	60 & 50	4.4/2.8-2.7-2.4 & 4.4/2.8-2.6-2.4	1800/Var	REV	3.412	10.475	2.653
EM-8630PS	1/2	115/208-230	60 & 50	6.6/4.2-3.9-3.4 & 6.5/4.2-3.9-3.4	1200/Var	REV	4.037	11.100	2.653
EM-8430PS	1/2	115/208-230	60 & 50	6.8/4.2-4.1-3.7 & 6.8/4.1-4.1-3.7	1800/Var	REV	3.662	10.725	2.653
EM-8640PS	3/4	115/208-230	60 & 50	9.4/5.9-5.6-4.8 & 9.4/6.0-5.6-4.9	1200/Var	REV	4.412	11.475	2.653
EM-8440PS	3/4	115/208-230	60 & 50	8.8/5.4-5.2-4.7 & 9.0/5.4-5.2-4.7	1800/Var	REV	4.037	11.100	2.653
EM-8650PS	1	115/208-230	60 & 50	12.0/7.5-7.1-6.2 & 12.0/7.6-6.9-6.2	1200/Var	REV	4.878	11.850	2.653
EM-8450PS	1	115/208-230	60 & 50	11.1/6.7-6.6-6.0 & 10.9/6.6-6.7-6.0	1800/Var	REV	4.412	11.475	2.653



Features:

- Resilient Rings Included
- Permanent Split Capacitor Design
- Reversing Plug
- Extended Thru Bolts
- Thermally Protected
- 40°C Ambient Rating
- Long Life Self-Aligning Sleeve Bearings



EM-1390 - EM-1391



All OmniDrive Models



EM-8906 - EM-8907
5BD1076 - 5BD1106

42 Frame - Three Speed



Stock #	Encl.	HP	Volts	Amps.	RPM	Shaft	Rotation	Replaces
EM-1390 *	OPEN	1/4	115	2.80	1075/3	1/2" x 4.00"	REV.	D150
EM-1391 *	OPEN	1/4	208-230	1.50	1075/3	1/2" x 4.00"	REV.	D151

48 Frame - Three Speed



Stock #	Encl.	HP	Volts	Amps.	RPM	Shaft	Rotation	Replaces
SS3583 *	OPEN	1/4	115	4.20	1075/3	1/2" x 4-1/2"	REV.	DD-3583
SS3584 *	OPEN	1/4	208-230	2.00	1075/3	1/2" x 4-1/2"	REV.	DD-3584
SS3585 *	OPEN	1/3	115	5.50	1075/3	1/2" x 4-1/2"	REV.	D-3585
SS3586 *	OPEN	1/3	208-230	2.80	1075/3	1/2" x 4-1/2"	REV.	DD-3586
SS3587 *	OPEN	1/2	115	7.50	1075/3	1/2" x 4-1/2"	REV.	DD-3587
SS3588 *	OPEN	1/2	208-230	3.60	1075/3	1/2" x 4-1/2"	REV.	DD-3588
SS3589 *	OPEN	3/4	115	10.20	1075/3	1/2" x 4-1/2"	REV.	DD-3589
SS3590 *	OPEN	3/4	208-230	5.50	1075/3	1/2" x 4-1/2"	REV.	DD-3590
EM-8906 • *	OPEN	1	115	12.30	1075/3	1/2" x 6-7/16"	REV.	R42812
EM-8907 • *	OPEN	1	208-230	5.10	1075/3	1/2" x 6-7/16"	REV.	R42023
5BD1076 • *	OPEN	3/4	575	2.30	1075/2	1/2" x 5.00"	REV.	HQ1095096
5BD1106 • *	OPEN	1	575	2.40	1075/2	1/2" x 5.00"	REV.	F1575DD

Features:

- Fits 9" & 10" Bolt Circle Diameter
- Permanent Split Capacitor Design
- Reversing Plug
- Thermally Protected
- 40°C Ambient Rating
- Long Life Self-Aligning Sleeve Bearings



All Models

48 Frame - Four Speed



Stock #	Encl.	HP	Volts	Amps.	RPM	Shaft	Rotation	Replaces
SS752*	OPEN	1/4	115	3.60	1075/4	1/2" x 6.00"	REV.	DD-034
SS753*	OPEN	1/3	115	4.80	1075/4	1/2" x 6.00"	REV.	DD-035
SS754*	OPEN	1/2	115	8.20	1075/4	1/2" x 6.00"	REV.	DD-036
SS753B•*+	OPEN	1/3	115	4.80	1075/4	1/2" x 6.00"	REV.	
SS754B•*+	OPEN	1/2	115	8.20	1075/4	1/2" x 6.00"	REV.	
SS972 *	OPEN	1/4	208-230	1.80	1075/4	1/2" x 6.00"	REV.	DD-044
SS973 *	OPEN	1/3	208-230	2.30	1075/4	1/2" x 6.00"	REV.	DD-045
SS974*	OPEN	1/2	208-230	3.80	1075/4	1/2" x 6.00"	REV.	DD-046



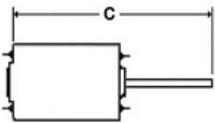
Ultimate Truck Stock Motor™

Features:

- High Efficiency P.S.C. Design
- Extended Mounting Studs
- Designed for Use With 370V Capacitors
- Class 'B' Insulation
- 36" Leads
- Includes Side Shell Holes For Rheem Units
- Continuous Duty, Air Over
- Reversible Rotation
- Automatic Reset Thermal Overload Protector
- 2.5" Diameter Hub Rings Included
- Sleeve and Ball Bearings



All Models



48 Frame - Four Speed



Stock #	Encl.	HP	Volts	Amps.	RPM	"C" Dim.	Shaft	Rotation
EM-5469 *	OPEN	1/3	208-230	2.40	825/4	6.74"	1/2" x 2.20"	REV.
EM-5460 *	OPEN	1/2	115	7.30	1075/4	9.80"	1/2" x 5.00"	REV.
EM-5461 *	OPEN	1/2	208-230	3.60	1075/4	9.80"	1/2" x 5.00"	REV.
EM-5470 ●*	OPEN	3/4	115	8.10	1075/4	11.60"	1/2" x 5.00"	REV.
EM-5471 ●*	OPEN	3/4	208-230	4.10	1075/4	11.60"	1/2" x 5.00"	REV.

Cross Reference

	Rotom	Genteq	A.O. Smith	Marathon	Fasco
EM-5469	N/A	N/A	N/A	N/A	N/A
EM-5460	R6-R43600	3463	FDL6001A	X077	D2835
EM-5461	R6-R43601	3464	FD6000A	X073	D833
EM-5470	R6-R43602	3466	FDL6002A	X074	D2832
EM-5471	R6-R43603	3467	FD6001A	X075	D2833

(●) Ball Bearing (*) P.S.C. Design



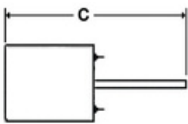
RESCUE EZ-WIRE®

Features:

- Side Shell holes
- Multi-Horsepower
- Reversible Rotation
- 36" Leads
- Universal Mounting
- Thermally Protected
- OAO 40°C Ambient



Capacitor Included



48 Frame



Formerly Emerson Motors

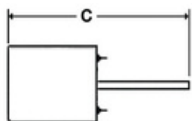
Stock #	Encl.	HP Range	Volts	Amps.	RPM	"C" Dim.	Shaft	Rotation
EM-5432	OPEN	1/2-1/6	115	7.3	1075/4	10.48"	1/2" x 5.0"	REV
EM-5433	OPEN	1/2-1/6	208-230	3.6	1075/4	10.75"	1/2" x 5.0"	REV



RESCUE EZ13[®]

Features:

- Universal ECM replacement for Furnaces and Air Handlers
- Electronically Controlled Brushless Permanent Magnet Motor
- Saves 25% of the Watts in A/C or Heating
- 75% Watt Reduction in Circulation Mode
- A Variety of Mounting Kits are Available
- Electronically Protected Motor
- Continuous Duty, Air Over
- 6000V Surge Protection
- Voltage 208-230V or 115V
- Up to 82% Efficiency
- Rotation Sensing
- Class 'B' Insulation
- 2 Year Warranty
- 40°C Ambient
- Ball Bearings
- 5 Speed Taps



Replaces thousands of ECM Motors
Ships Same Day from Stock !



48 Frame

Stock #	Encl.	HP Range	Volts	Amps.	RPM	"C" Dim.	Shaft	Rotation
EM-5632	OPEN	1/2-1/3	115/208-230	6.3/4.0-3.8	1075/5	11.25"	1/2" x 5.0"	REV
EM-5634	OPEN	1/2	460	1.2	1050/Var	2.837"	1/2" x 5.0"	REV
EM-5624	OPEN	1/3	460	0.8	1050/Var	2.837"	1/2" x 5.0"	REV
EM-5642	OPEN	3/4	115/208-230	9.30/5.8-5.4	1075/5	11.60"	1/2" x 5.0"	REV
EM-5644	OPEN	3/4	460	1.7	1050/Var	2.837"	1/2" x 5.0"	REV
EM-5652	OPEN	1	115/208-230	12.4/7.8-7.2	1075/5	11.98"	1/2" x 5.0"	REV
EM-5654	OPEN	1	460	2.3	1050/Var	2.837"	1/2" x 5.0"	REV
EM-56205S	OPEN	1/2-1/3	208-230	6.3/4.8-3.8	1075/Var	2.837"	1/2" x 5.0"	REV
EM-56105S	OPEN	1/2-1/3	115	6.3/4.8-3.8	1075/Var	2.837"	1/2" x 5.0"	REV
EM-56207S	OPEN	3/4	208-230	5.8-5.6/6.1-5.2	1050/Var	2.837"	1/2" x 5.0"	REV
EM-56107S	OPEN	3/4	115	9.3/5.8-5.4	1075/Var	10.75"	1/2" x 5.0"	REV
EM-56210S	OPEN	1	203-230	6.9-6.6/7.5-6.5	1050/Var	2.837"	1/2" x 5.0"	REV
EM-56110S	OPEN	1	115	10.3/10.8	1050/Var	10.48"	1/2" x 5.0"	REV



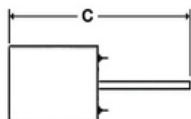
RESCUE EZ16[®]

Features:

- Universal ECM replacement for Furnaces and Air Handlers
- Electronically Controlled Brushless Permanent Magnet Motor
- Saves 25% of the Watts in A/C or Heating
- 75% Watt Reduction in Circulation Mode
- A Variety of Mounting Kits are Available
- Electronically Protected Motor
- Continuous Duty, Air Over
- 6000V Surge Protection
- Voltage 208-230V or 115V
- Up to 82% Efficiency
- Rotation Sensing
- Class 'B' Insulation
- 2 Year Warranty
- 40°C Ambient
- Ball Bearings
- 16 Pin variable speed replacement motor



Replaces ECM2.0, ECM2.3, EON AND NIDEC 16x4w ECM Motors Ships Same Day from Stock !



48 Frame



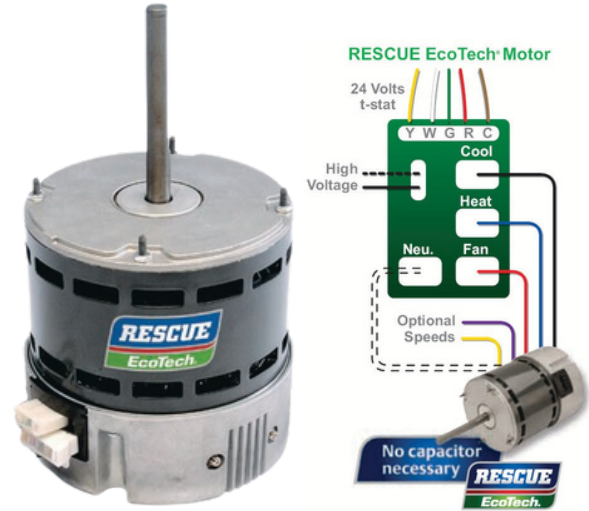
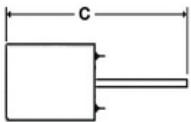
Stock #	Encl.	HP Range	Volts	Amps.	RPM	"C" Dim.	Shaft	Rotation
EM-5863	OPEN	1/3	115/208-230	4.5/2.9-2.7	1075/Var	10.48"	1/2" x 5.0"	REV
EM-5862	OPEN	1/2	115/208-230	6.4/4.0-3.8	1075/Var	10.75"	1/2" x 5.0"	REV
EM-5861	OPEN	3/4	115/208-230	9.3/5.9-5.5	1075/Var	11.10"	1/2" x 5.0"	REV
EM-5860	OPEN	1	115/208-230	12.1/7.6-7.1	1075/Var	11.98"	1/2" x 5.0"	REV



RESCUE EcoTech®

Features:

- Electronically Controlled Brushless Permanent Magnet Motor
- Up to 82% Efficiency
- Saves 25% of the Watts in A/C or Heating
- 75% Watt Reduction in Circulation Mode
- Easy Voltage Change from 230V to 115V
- Electronically Protected Motor
- Continuous Duty, Air Over
- No Capacitor Required
- 6000V Surge Protection
- Reversible Rotation
- Class 'B' Insulation
- 36" Leads
- 40°C Ambient
- Ball Bearings



All Models

Actual connections may vary

48 Frame - Five Speed



Stock #	Incl.	HP Range	Volts	Amps.	RPM	"C" Dim.	Shaft	Rotation
EM-5522ET●	OPEN	1/3 - 1/5	115 / 230	4.02 / 2.70	1075/5	9.75"	1/2" x 4.50"	REV.
EM-5532ET●	OPEN	1/2 - 1/4	115 / 230	6.20 / 3.90	1075/5	9.75"	1/2" x 4.50"	REV.
EM-5542ET●	OPEN	3/4 - 1/3	115 / 230	8.50 / 5.20	1075/5	10.75"	1/2" x 4.50"	REV.
EM-5552ET●	OPEN	1 - 1/2	115 / 230	11.50 / 6.90	1075/5	11.25"	1/2" x 4.50"	REV.

Cross Reference

	Rotom	Genteq	Mars	A.O. Smith
EM-5522ET	N/A	6103E*	N/A	N/A
EM-5532ET	R6-R75531 R6-R755301	6105E*	06005	CSL1056 CS1056
EM-5542ET	N/A	6107E*	N/A	N/A
EM-5552ET	R6-R75551 R6-R755501	6110E*	06010	CSL1106 CS1106

(*) 115 Volt Only

- **Fits a Wide Variety of Applications** - The fully reversible motor comes in a range of horsepower sizes to fit your market and is dual voltage so you can provide an indoor blower solution to all your customers.
- **Quiet, Efficient Circulation Speed** - With a low 600 RPM circulation speed, your customers can cycle air continuously without the noise, draft or electricity cost of a PSC motor. Often using less energy than a 100 watt bulb. Up to 75% watts savings are typical.
 - **Active Airflow Management** - The advanced motor control reacts to change in static pressure, helping to maintain airflow as vents are closed or the filter becomes dirty.
 - **Very Energy Efficient** - The RESCUE EcoTech motor is up to 25% more electrically efficient at high speed compared to a standard blower motor. 75% watt reduction in circulation mode.

RESCUE Select Pro®

**Preprogrammed with the option to match the OEM profile.
ECM Replacement for furnaces and air handlers**

- Truck Stock
- OEM Direct Replacement
- Programmable and Tunable in Operations
- Replaces Thousands of OEM Models
- Improved Reliability with build-in 6,000 volt surge protection
- Industry leading moisture protection
- Integrated Bluetooth technology



SPECIFICATIONS

HORSEPOWER: 1/3, 1/2, 3/4 and 1 HP
VOLTAGE: 1Ø, 115, 208-230 Vac
SPEEDS: Programmable (1075/Var)
ROTATION: Programmable (CCW or CW)
INPUTS: 24Vac, Tap Inputs
HERTZ: 50/60 Hz
OPERATION MODE: Constant Torque
FRAME: NEMA 48
ENCLOSURE: Open Air Over (OAO)
EFFICIENCY: Up to 82%
MOUNTING: Belly-band

Catalog Number	HP	Volts	Amps.	RPM	Dim. A	Dim. B
EM-6633	1/2-1/3	115/208-230	6.3/4.0-3.8	1075/Var	3.662	11.225
EM-6643	3/4	115/208-230	9.3/5.8-5.4	1075/Var	4.037	11.6
EM-6653	1	115/208-230	12.4/7.8-7.2	1075/Var	4.412	11.975



Integrated Bluetooth® Technology

Preprogrammed,
Ready to install!

No additional
programming tool
required!

To unlock advanced features, download the RESCUE Select Pro programming app:
 • OEM direct programming
 • Customized airflow in operation
 • Real-time diagnostics
 FREE from Google Play or the App store



Rescue[®] PerfectSpeed[®]

Features:

- Up to 82% efficient, 30% better than common PSC motors
- 0-10VDC or onboard potentiometer
- LED display indicates speed and percentage of demand
- User Interface mounted directly to the motor or remote mounted within the unit enclosure
- Optional remote potentiometer (customer supplied) allows control from up to 3' away



SPECIFICATIONS

HORSEPOWER: 1/2-1/3, 1-3/4 HP

VOLTAGE: 1Ø, 115/208-230-277

SPEEDS: 1200/Var & 1800/Var

OPERATION MODE: Constant Torque

INPUTS: 0-10VDC, remote potentiometer or onboard pot

FRAME: NEMA 48

ENCLOSURE: Open Air Over (OAO)

MOUNTING: Belly Band/Stud Mount or Rigid base

RIGID BASE

Stock #	HP	Volts	Amps.	HZ	RPM	Shaft	"C" Dim	Rotation
EM-B8630UI	1/2-1/3	115/208-230	6.6/4.2-3.9 & 6.5/4.6-3.9	60&50	1200/ Var	1/2" x 4-1/2"	2.063"	REV
EM-B8430UI	1/2-1/3	115/208-230	6.8/4.2-4.1 & 12.0/7.6-7.9	60&50	1800/ Var	1/2" x 4-1/2"	2.063"	REV
EM-B8650UI	1-3/4	115/208-230	12.0/7.5-7.1 & 12.0/7.6-6.9	60&50	1200/ Var	1/2" x 4-1/2"	2.563"	REV

BELLY BAND / STUD MOUNT

Stock #	HP	Volts	Amps.	HZ	RPM	Shaft	"C" Dim	Rotation
EM-8632UI	1/2-1/3	115/208-230-277	6.6/4.2-3.9-3.4 & 6.5/4.2-3.9-3.4	60&50	1200/Var	1/2" x 4-1/2"	10.75	REV
EM-8432UI	1/2-1/3	115/208-230-277	6.3/4.1-3.7-3.4 & 6.3/4.1/3.8-3.4	60&50	1800/Var	1/2" x 4-1/2"	10.25	REV
EM-8642UI	3/4-1/2	115/208-230-277	9.4/5.9-5.6-4.8 & 9.4/6.0-5.6-4.9	60&50	1200/Var	1/2" x 4-1/2"	11.75	REV
EM-8442UI	3/4-1/2	115/208-230-277	8.8/5.4-5.2-4.7 & 9.0/5.4-5.2-4.7	60&50	1800/Var	1/2" x 4-1/2"	11.75	REV
EM-8652UI	1-3/4	115/208-230-277	11.0/7.7-6.7 & 11.8/7.3-6.6	60&50	1200/Var	1/2" x 4-1/2"	11.75	REV
EM-8452UI	1-3/4	115/208-230-277	12.4/8.1-7.2 & 11.8/7.4-6.4	60&50	1800/Var	1/2" x 4-1/2"	11.75	REV

RESCUE PerfectSpeed®

Rescue® PerfectSpeed® Commercial Booster Pump Motor

Features:

- Variable Speed Pump Motor
- No Programming Required
- GFCI Compliant Product
- UL and CSA Listing

SPECIFICATIONS

HORSEPOWER: 1/4, 1/2, 3/4 HP

VOLTAGE: 115 or 230

RPM: 300 to 1800 RPM

MOUNTING: NEMA® 56C or 56J Frame

THREAD SIZE (56J): 7/16-20 UNF-2A, Ball Bearing
Stainless Steel Shaft



56C KEYED SHAFT

Stock #	HP	Volts	Amps.	HZ	RPM	Shaft	"C" Dim	Rotation
EM-EC8300	1/4-1/2	115	6.1-6.5	60&50	1800/Var	1/2" x 4-1/2"	12.832	REV
EM-EC8310	1/4-1/2	208-230	3.4-3.2 & 3.5-3.3	60&50	1800/Var	1/2" x 4-1/2"	12.832	REV
EM-EC8320	3/4	115	8.2-9.1	60&50	1800/Var	1/2" x 4-1/2"	12.832	REV
EM-EC8330	3/4-1	208-230	6.8-6.4 & 6.9-6.5	60&50	1800/Var	1/2" x 4-1/2"	12.832	REV
EM-EC8320F*	3/4	115	8.2-9.1	60&50	1800/Var	1/2" x 4-1/2"	12.832	REV

*Footed

56J THREADED SHAFT

Stock #	HP	Volts	Amps.	HZ	RPM	Shaft	"C" Dim	Rotation
EM-EC8340	1/4-1/2	115	6.1-6.5	60&50	1800/Var	1/2" x 4-1/2"	13.331	CCWSE
EM-EC8350	1/4-1/2	208-230	3.4-3.2 & 3.5-3.3	60&50	1800/Var	1/2" x 4-1/2"	13.331	CCWSE
EM-EC8360	3/4	115	8.2-9.1	60&50	1800/Var	1/2" x 4-1/2"	13.331	CCWSE
EM-EC8370	3/4-1	208-230	6.8-6.4 & 6.9-6.5	60&50	1800/Var	1/2" x 4-1/2"	13.331	CCWSE

Genteq® Evergreen® EM & CM Motors

Evergreen EM Motors

The Evergreen® EM motor is a drop-in replacement for OEM constant torque ECM indoor blower motors such as Genteq X13 and Endura Pro motors, US Motors®* SelecTech®* and RESCUE SELECT®*, and Broad Ocean®* motors with 24 VAC speed taps.

Evergreen CM Motors

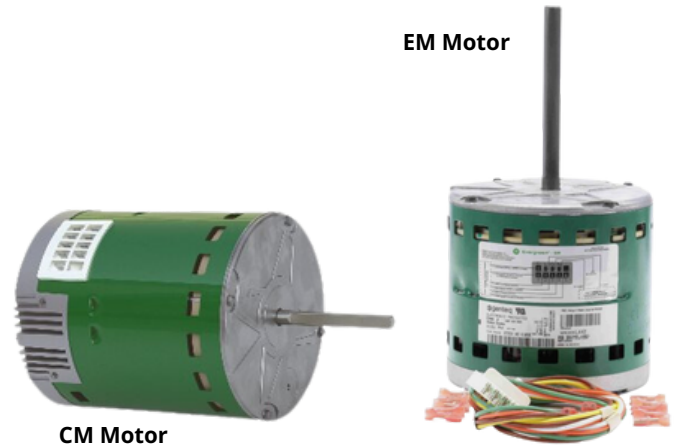
Evergreen CM motor is a drop-in replacement for constant torque ECM such as Genteq X13 and Endura Pro motors or equivalent competitor models with 24 VAC speed taps. With no programming requirements, it's ready when you need it at your local HVAC distributor or on your truck. With no complex wiring, you will get the job done quickly.

Benefits:

- Compatible with OEM harness
- No complex wiring or configuration
- Automatically determines motor direction using rotation sensing technology
- Maintains system efficiency and performance
- Soft start and off-ramp for quiet operation
- (5)24 VAC speed taps (Low-High)

Reliability:

- Encapsulated electronics
- Electronic overload protection
- 4kV surge protection
- Two year warranty
- UL recognized component



Stock #	HP	Volts	Amps.	RPM	Shaft	"C" Dim	Rotation
GE-6203E	1/3	208-230	2.8	1075/5	1/2" x 5"	10.17"	REV
GE-6703	1/3	208-230/277	2.8	1075/5	1/2" x 5"	9.17"	REV
GE-6205E	1/2	208-230	4.1	1075/5	1/2" x 5"	10.67"	REV
GE-6405	1/2	460	2.1	1075/5	1/2" x 5"	10.53"	REV
GE-6705	1/2	20-230/277	4.1	1075/5	1/2" x 5"	9.67"	REV
GE-6207E	3/4	208-230	6.0	1075/5	1/2" x 5"	10.42"	REV
GE-6407	3/4	460	3.1	1075/5	1/2" x 5"	11.28"	REV
GE-6707	3/4	208-230/277	6.0	1075/5	1/2" x 5"	10.42"	REV
GE-6210E	1	208-230	7.6	1075/5	1/2" x 5"	12.17"	REV
GE-6410	1	208-230/277	4.0	1075/5	1/2" x 5"	12.03"	REV
GE-6710	1	208-230/277	7.6	1075/5	1/2" x 5"	11.17"	REV

Genteq® Evergreen® VS Motors

Evergreen VS

Designed to replace Genteq® Constant airflow (Variable Speed) ECM indoor blower motor.
 Designed specifically to replace GE® models 2.0 and 2.5, Genteq models 2.3, EON® and 3.0 motors.

Benefits: Contractors

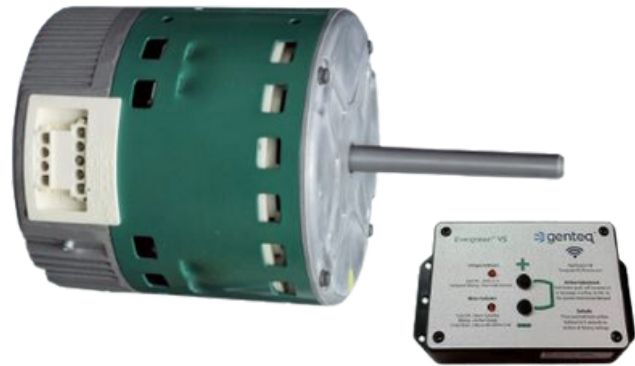
- Pre-programmed
- Plug-n-play
- Dual voltage
- Truck stock
- Automatic dual rotation

Benefits: Customers

- Complete all calls the same day including after hours calls
- Reduce time on call using part on truck
- Built by same manufacturer as original motor
- Maintains system performance and efficiency

Reliability

- Encapsulated electronics
- Electronic overload protection
- 6kV surge protection
- Two year warranty
- UL recognized component



Evergreen VS

Evergreen VS Motors

Stock #	HP	Volts	Amps.	RPM	"C" Dim.	Shaft	Rotation
GE-6503V	1/3	120 / 240	5.0 / 2.8	1050/Var	10.71"	1/2" x 5.0"	REV.
GE-6505V	1/2	120 / 240	7.7 / 4.3	1050/Var	11.21"	1/2" x 5.0"	REV.
GE-6507V	3/4	120 / 240	10.1 / 6.1	1050/Var	11.96"	1/2" x 5.0"	REV.
GE-6510V	1	120 / 240	12.8 / 7.4	1050/Var	12.71"	1/2" x 5.0"	REV.

New Stock Numbers (User interface included in a box)

Stock #	HP	Volts	Amps.	RPM	"C" Dim.	Shaft	Rotation
GE-6503VUI	1/3	120 / 240	5.0 / 2.8	1050/Var	10.71"	1/2" x 5.0"	REV.
GE-6505VUI	1/2	120 / 240	7.7 / 4.3	1050/Var	11.21"	1/2" x 5.0"	REV.
GE-6507VUI	3/4	120 / 240	10.1 / 6.1	1050/Var	11.96"	1/2" x 5.0"	REV.
GE-6510VUI	1	120 / 240	12.8 / 7.4	1050/Var	12.71"	1/2" x 5.0"	REV.

Genteq® Evergreen® Motors

Designed to replace factory PSC indoor blower motors in HVAC systems.

Contractor and Consumer Benefits

- Up to 25% more efficient than PSC motors in heating and cooling modes
- Energy savings (up to 75% more efficient than PSC motors in continuous fan mode)
- Constant torque technology
- No capacitors required
- Reduce truck stock and get the job done



Evergreen IM Motors

Stock #	HP	Volts	Amps.	RPM	Shaft	"C" Dim.	Rotation
GE-6005	1/2	115 / 230	6.7 / 4.0	1075/5	1/2" x 5.0"	11.26"	REV.
GE-6010	1	115 / 230	11.0 / 6.7	1075/5	1/2" x 5.0"	12.76"	REV.

Cross Reference

Stock #	US Motor	Azure/Mars	Mars	Century
GE-6005	5520ET, 5521ET, 5530ET, 5531ET, 5522ET, 5532ET	10800	10860	CSL1056, CS1056
GE-6010	5540ET, 5541ET, 5550ET, 5551ET, 5542ET, 5552ET	10801	10861	CSL1106, CS1106

The Evergreen DS dual shaft motor easily replaces most permanent split capacitor (PSC) motors in modular building applications. Designed to replace direct drive, dual shaft induction motors found in HVAC indoor blower motor applications with forward curved (squirrel cage) blower wheels.

SPECIFICATIONS

HORSEPOWER: 1/2, 1/3, 3/4 HP

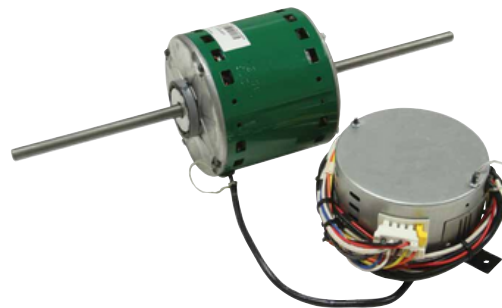
ENCLOSURE: Open Air Over (OAO)

SHAFT: 6.4" single flat

MOUNTING: Pedestal or belly band mount (2.25" or 2.5" dia.)

AMBIENT RATING:

- 20°C to 55°C on 1/3 HP and 1/2 HP (non-icing conditions)
- 20°C to 45°C on 3/4 HP (non-icing conditions)



Stock #	HP	Volts	Amps.	RPM	Shaft	"C" Dim	Rotation
GE-6007DS	3/4	115/208-230	11.0/6.7	1070/5	1/2" x 6-3/4"	19.5"	CCW/CW



Blanchard-Ness

Stock #	Incl.	HP	Volts	Amps.	RPM	Shaft	Rotation	Replaces
SS605	SKEL	---	120	1.00	2800	3/16" x 1-3/4"	CCWSE	AIC605
D1124	OPEN	1/20	115	2.10	1550	5/16" x 3.00"	CWSE	-
D1126	OPEN	1/15	208-230	1.10	1550	5/16" x 3.00"	CWSE	-
SS358	OPEN	1/20	115	2.00	1550	5/16" x 3.00"	CWSE	AIC1052
SS359	OPEN	1/20	208-230	1.10	1430	5/16" x 3.00"	CWSE	AIC1053
SS302	OPEN	1/100	240	0.30	1400	1/4" x 1.50"	CCWSE	E1004
SS326	OPEN	1/85	115	0.50	1550	1/4" x 1.45"	CCWSE	79101, E1001
EM-9662 ●*	OPEN	1/20	115	0.85	1550	5/16" x 3.00"	REV.	MA1009
EM-9656 ●*	OPEN	1/15	208-230	0.48	1550	5/16" x 3.00"	REV.	MA1010
UEH977	O.O.S.E.	1/2	575	0.85	1140	5/8" x 3.30"	REV.	AICH977, T2533, T2529
SS3729 ●*	T.E.	1/3	208-230	2.50	1075	1/2" x 6.00"	REV.	E1022, E1025
SS3730 ●*	T.E.	1/2	208-230	3.40	1075	1/2" x 6.00"	REV.	E1064
H564 ●	O.O.S.E.	1/2	200-230/460	2.8-2.6 / 1.30	1140	5/8" x 6.00"	REV.	E1020, E1066
H977 ●	T.E.	1/2	575-3Ø	0.80	1140	5/8" x 3-3/8"	REV.	AICH977
H686	O.O.S.E.	1	200-230/460-3Ø	4.4-4.0 / 2.00	850	5/8" x 5.00"	REV.	T2537
UEH686 ●	O.O.S.E.	1	208-230/460-3Ø	5.0 / 2.50	850	5/8" x 5.00"	REV.	X507
H962 ●	O.O.S.E.	1	575-3Ø	1.60	850	5/8" x 3-1/4"	REV.	X527
UEH962 ●	O.O.S.E.	1	575-3Ø	2.10	850	5/8" x 6.00"	REV.	X527
UEH699 ●	O.O.S.E.	2	208-230/460-3Ø	7.8 / 3.90	1140	5/8" x 6.00"	REV.	X509
UEX526 ●	O.O.S.E.	2	575-3Ø	2.80	1140	5/8" x 6.00"	REV.	X526



Cancoil Thermal

Stock #	Incl.	HP	Volts	Amps.	RPM	Shaft	Rotation	Replaces
EM-9662 ●*	OPEN	1/20	115	0.85	1550	5/16" x 3.00"	REV.	MA1009
EM-9656 ●*	OPEN	1/15	208-230	0.48	1550	5/16" x 3.00"	REV.	MA1010
H977 ●	T.E.	1/2	575-3Ø	0.80	1140	5/8" x 3-3/8"	REV.	AICH977
181651 ●	T.E.	2	575-3Ø	2.70	1140	5/8" x 2-1/2"	REV.	MA1003
MA1074 ●	T.E.	2	575-3Ø	3.10	1140	5/8" x 3.00"	REV.	CAN2575
H698 ●	T.E.	2	208-230/460	6.8-6.2 / 3.10	1140	5/8" x 6.00"	REV.	MA1075



Carrier

Stock #	Stack	Volts	Amps.	RPM	Shaft	Rotation	Replaces
SS1506 ●*	SEMI-ENCL	1/2	575	1.80	1075	1/2" x 1-9/16"	CCWLE CCFM12575, HC43VE575
OCA1056 ●*	SEMI-ENCL	1/2	200-230	4.60 / 2.30	1075	1/2" x 1-9/16"	REV. 3288, HC43VE200B
5OCA3056 ●	SEMI-ENCL	1/2	575-3Ø	1.00	1140	1/2" x 2-1/2"	REV. HD44ML461, P48J6A2
5BD1106 ●*	OPEN	1	575	2.40	1075/2	1/2" x 5.00"	REV. F1575DD, 50HJ900575
H953V1 ●	OPEN	2	575-3Ø	2.40	1800	7/8" x 2.30"	REV. F21853, HD52GA875
UEH953 ●	OPEN	2	575-3Ø	2.70	1725	7/8" x 2-1/4"	REV. F21853, HD52GA875
H955L ●	OPEN	3	575-3Ø	3.60	1800	7/8" x 2.30"	REV. F31853, HD58DL575
UEH955 ●	OPEN	3	575-3Ø	3.40	1800	7/8" x 2.30"	REV. F31853, HD58DL575
181574 ●	O.O.S.E.	1.5	575	2.70	1075	5/8" x 6.00"	REV. CCFM1575, HC51TE575
H978 ●	O.O.S.E.	SPL	208-230/460/575-3Ø	5.5/3.4/2.8	1140	5/8" x 3-5/8"	REV. HD52AK652
H979L ●	OPEN	5	208-230/460-3Ø	15.00 / 7.40	1725	7/8" x 2-5/16"	REV. HD60FK652
H980L ●	OPEN	3	208-230/460-3Ø	10.60 / 4.80	1725	7/8" x 2-5/16"	REV. HD60FK651
HD60FE575 ●	OPEN	5	575-3Ø	5.60	1725	7/8" x 3-1/4"	REV. HD60FE575



Copeland

Stock #	Encl.	HP	Volts	Amps.	RPM	Shaft	Rotation	Replaces
254	OPEN	35W	115	1.40	1500	Hubless	CWLE	R3511, 050-0227-01
256	O.O.S.E	35W	230	0.70	1500	Hubless	CWLE	R3512, 050-0227-02
260	OPEN	50W	230	0.85	1500	3/8" x 1-1/2"	CWLE	R5012, 050-0017-01
174A *	OPEN	1/6	208-230	1.00	1625	1/2" x 2-1/2"	REV.	R3051
OCP0251 *	OPEN	1/6	230	1.50	1625	1/2" x 2-1/2"	CCWSE	050-0251-00
OCP0250 *	OPEN	1/4	230	1.50	1625	1/2" x 2-1/2"	CWLE	050-0250-00
OCP1024 ●*	OPEN	1/4	208-230	1.50	1625	1/2" x 3.00"	CWLE	R3047, 050-0107-01
EM-1265 *	OPEN	1/6	460	0.55	1550	1/2" x 3-1/16"	CWLE	050-0265-01
EM-1275 *	OPEN	1/4	575	0.70	1625	1/2" x 3.00"	CWLE	050-0250-02 050-0266-02

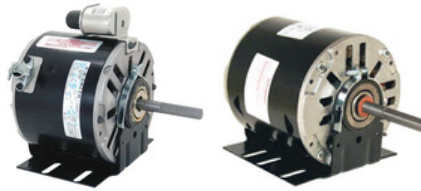
(●) Ball Bearing (*) P.S.C. Design



SS9428

Dunham Bush

Stock #	Encl.	HP	Volts	Amps.	RPM	Shaft	Rotation	Replaces
SS9428	OPEN	1	575	1.70	1100	1/2" x 2-3/4"	REV.	HM3T007, HM3T010



160A

OHR1106

Hill

Stock #	Encl.	HP	Volts	Amps.	RPM	Shaft	Rotation	Replaces
160A *	OPEN	1/3	208-230	3.00	1625	1/2" x 4.00"	REV.	R3001, PP3955B
OHR1106 ●*	SEMI-ENCL	1	208-230	7.10 / 6.40	1075	1/2" x 3-3/4"	REV.	R3067, PP19162G



SS605

D1124 - D1126

EM-9662 - EM-9656

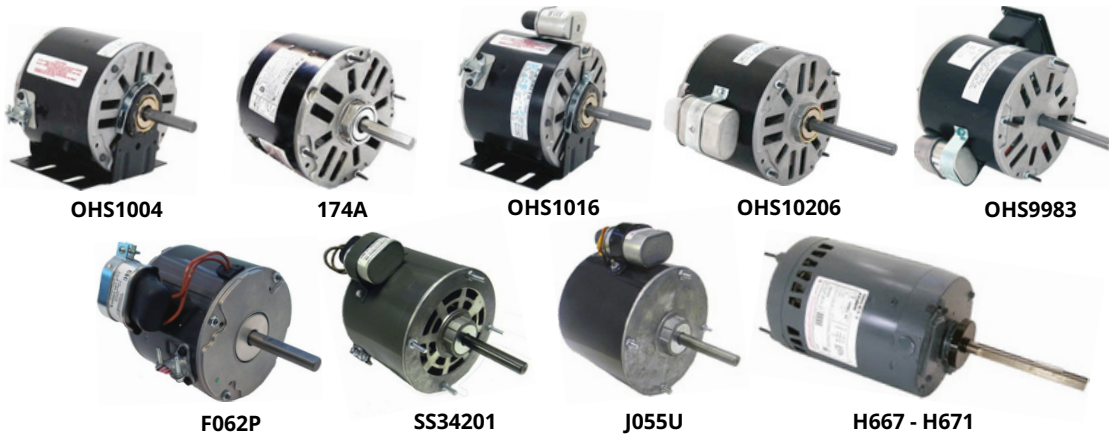
SS9721

SS3729 - SS3730

EM-4941

Heatcraft (Bohn/Larkin)

Stock #	Encl.	HP	Volts	Amps	RPM	Shaft	Rotation	Replaces
SS605	SKEL	---	120	1.00	2800	3/16" x 1-3/4"	CCWSE	AIC605
D1124	OPEN	1/20	115	2.10	1550	5/16" x 3.00"	CWSE	---
EM-9662 ●*	OPEN	1/20	115	0.85	1550	5/16" x 3.00"	REV.	5001L, 5008S, 5004L 5034L, 5034LS, 5008SS
D1126	OPEN	1/15	208-230	1.10	1550	5/16" x 3.00"	CWSE	---
EM-9656 ●*	OPEN	1/15	208-230	0.48	1550	5/16" x 3.00"	REV.	7190-0442, 25309101 5008T, 5034M, 5034MS
SS9721 ●*	OPEN	1/12	115/208-230	1.10/0.60	1550	5/16" x 3.15"	REV.	R90721, 253-9101
SS9729 ●*	T.E.	1/3	208-230	2.50	1075	1/2" x 6.00"	REV.	CF-3733
SS9730 ●*	T.E.	1/2	208-230	3.40	1075	1/2" x 6.00"	REV.	CF-3734
EM-4941 ●*	T.E.	1/2	208-230/460	2.80/1.50	1100	1/2" x 4-1/2"	REV.	---



Hussmann

Stock #	Encl.	HP	Volt	Amps	RPM	Shaft	Rotation	Replaces
OHS1004 *	OPEN	1/8	230	1.00	1550	1/2" x 2.00"	CWLE	3011
174A *	OPEN	1/6	208-230	1.00	1625	1/2" x 2-1/2"	REV.	3057
OHS1016 *	OPEN	1/5	230	1.60	1075	1/2" x 3.00"	CWLE	3009
OHS10206 ●*	OPEN	1/5	208-230	1.30	1075	1/2" x 3.00"	CWLE	3008/3012
OHS9983 ●*	OPEN	1/2	208-230	2.70	1725	1/2" x 3-1/2"	CWLE	R3051, 259983
F062P ●	OPEN	1/20	600	0.42	1550	1/2" x 2-1/2"	CWSE	206578, HHCFM DA2F062, DA2F091
SS34201 ●*	OPEN	1/2	575	0.50	1075	1/2" x 3.30"	CCWSE	204201, R34201
J055U ●*	T.E.	1/6	575	0.80	1675	1/2" x 3.20"	REV.	77238, 1042140 R30575, FM001
H667 ●	O.O.S.E	1	200-230/460-3Ø	5.3-5.2/2.6	1140	5/8" x 6.00"	REV.	T2540
H671 ●	O.O.S.E	1	575-3Ø	2.00	1140	5/8" x 6.00"	REV.	T2538



Keeprite

Stock #	Encl.	HP	Volt	Amps	RPM	Shaft	Rotation	Replaces
SS370 ●*	OPEN	1/20	115	0.80	1550	5/16" x 2.80"	CCWSE	R370
SS371 ●*	OPEN	1/20	230	0.30	1550	5/16" x 2.80"	CCWSE	R371
SS2269	OPEN	1/15	115	2.70	1050	1/2" x 2.75"	CWSE	160269, R2269
SS2657	OPEN	1/15	230	1.20	1550	3/8" x 2.44"	CCWSE	81335, R2657
SS2658	OPEN	1/15	115	2.30	1550	3/8" x 2.44"	CCWSE	81356, R2658
FE1026 ●*	T.E.A.O.	1/4	208-230	1.80	1075/2	1/2" x 6.00"	REV.	AICF171672
G004U ●	T.E.	1/4	575-3Ø	0.46	1100	5/8" x 2.93"	REV.	171065, R31065
5BD1076 ●*	OPEN	3/4	575-1Ø	2.30	1075/2	1/2" x 5.00"	REV.	F34575DD, HQ1095096
173946U	OPEN	1.25	575	1.80	1100	5/8" x 3"	REV.	1043299-01, T1946
187289U	OPEN	1 SPL	575	2.40	850	5/8" x 3"	REV.	1062968-001, 1089453

(●) Ball Bearing (*) P.S.C. Design



Krack

Stock #	Encl.	HP	Volts	Amps.	RPM	Shaft	Rotation	Replaces
D1189	T.E.	1/25	115/200-230	1.30	1550	5/16" x 1-3/4"	CWSE	11528, JAZP216
EM-9662 ●*	OPEN	1/20	115	0.85	1550	5/16" x 3.00"	REV.	9633, E206447
EM-9656 ●*	OPEN	1/15	208-230	0.48	1550	5/16" x 3.00"	REV.	9634, E206448
OKR1096 ●	T.E.A.O.	1/2	208-230/460-3Ø	2.0-1.9/0.95	1140	5/8" x 2.00"	REV.	150372, 11096
OKR1503 ●	O.O.S.E.	1	200-230/460-3Ø	4.4-1.9/2.00	850	5/8" x 3-1/4"	REV.	151437, 11503



Lennox

Stock #	Encl.	HP	Volts	Amps.	RPM	Shaft	Rotation	Replaces
EM-1268 *	OPEN	1/5	115	3.50	1075/4	1/2" x 3.50"	REV.	P-8-9662
SS1314 *	OPEN	1/3	115	6.00	1075/4	1/2" x 5-1/8"	CCWLE	DD-1314, F1314D
9405A ●*	OPEN	3/4	115	9.70	1075/5	1/2" x 3-1/8"	CCWLE	45H3301, 28F01
9406A ●*	OPEN	3/4	208-230	6.60	1075/3	6-1/2" x 5/8" x 5-1/4"	CCWLE	31C8201
LX7930 *	OPEN	3/4	460	2.30	1075/3	1/2" x 2.50"	CWSE	43G5201
5BD1106 ●*	OPEN	1	575	2.40	1075/2	1/2" x 5.00"	REV.	F34575DD, 88C7601
H671 ●	O.O.S.E.	1	575-3Ø	2.00	1140	5/8" x 6.00"	REV.	98G6501
H953V1 ●	OPEN	2	575-3Ø	2.40	1800	7/8" x 2.30"	REV.	32657/F21853
UEH953 ●	OPEN	2	575-3Ø	2.70	1725	7/8" x 2-1/4"	REV.	32657/F21853



C663



SS2531 - SS2535

Liebert

Stock #	Encl.	HP	Volts	Amps.	RPM	Shaft	Rotation	Replaces
C663	O.O.S.E.	3/4	208-230/460	4.80-4.20/2.10	1100	5/8" x 4.00"	CCWLE	B-0950
SS2531	O.O.S.E.	1	208-230/460	4.20/2.10	1140	5/8" x 6.00"	REV.	R2531
SS2535	O.O.S.E.	1	575	1.50	1140	5/8" x 3.20"	REV.	R2535



EM-9662 - EM-9656



SS368 - SS369



RMT0004 - RMT0005



RMT0062



MA1074

Ref Plus

Stock #	Encl.	HP	Volts	Amps.	RPM	Shaft	Rotation	Replaces
EM-9662 ●*	OPEN	1/20	115	0.85	1550	5/16" x 3.00"	REV.	MA1009
EM-9656 ●*	OPEN	1/15	208-230	0.48	1550	5/16" x 3.00"	REV.	MA1010
SS368	OPEN	1/20	115	1.80	1550	5/16" x 2-3/4"	CCWSE	RMT-0011
SS369	OPEN	1/20	208-230	0.90	1550	5/16" x 2-3/4"	CCWSE	RMT-0012
RMT0004E ●	T.E.	34W	115	1.60	1550	Hubless	CCWSE	NU-34-45-2/1543
RMT0005E ●	T.E.	34W	230	0.80	1550	Hubless	CCWSE	NU-34-45-4/1542
RMT0062 ●	O.O.S.E.	1.5	575-3Ø	2.50	860	5/8" x 2-1/2"	REV.	43846, 43424
MA1074 ●	T.E.	2	575-3Ø	3.10	1140	5/8" x 3.00"	REV.	RMT-0064



276



981



OTC6001 - OTC6004



EM-1779P - EM-1775P



9487



OTC1862 - OTC1864

Tecumseh

Stock #	Encl.	HP	Volts	Amps.	RPM	Shaft	Rotation	Replaces
276	OPEN	50W	230	0.85	1550	5/16" x 2-1/2"	CCWLE	810M050A62, TFM502
SS981	OPEN	1/15	460	0.60	1550	5/16" x 2-1/2"	CCWLE	810G037A47, 810G050A49
OTC6001	OPEN	1/15	230	0.30	1550	5/16" x 2-3/4"	CCWLE	810S050A99
EM-1779P *	OPEN	1/15	230	0.62	1625	5/16" x 3.00"	CCWLE	TFM502, 810E050A85, F48HXDEJ1779
D9487	OPEN	1/12	230	1.30	1500	5/16" x 2-1/8"	CWLE	TFM262
OCT6004	OPEN	1/20	230	1.10	1550	5/16" x 2-1/2"	CCWLE	810S037B01, R2372
EM-1775P*	OPEN	1/20	230	0.50	1500	5/16" x 3.00"	CCWLE	F48DEF1775, TFM372, 810E037A84
OTC1862 ●*	OPEN	1/4	230	1.90	1625	1/2" x 2-3/4"	CWLE	TFM1862
OTC1864 ●*	OPEN	1/4	460	0.95	1625	1/2" x 2-3/4"	CWLE	TFM1864

(●) Ball Bearing (*) P.S.C. Design



Trane

Stock #	Encl.	HP	Volt	Amps	RPM	Shaft	Rotation	Replaces
954 *	OPEN	1/30	115	0.60	1100/3	1/2" x 8-1/2"	CWLE	MOT-1878, MOT-1875
SS9608 *	OPEN	1/20	115	0.60	1100/3	1/2" x 9-7/8"	REV.	MOT-1875, X70500149-02
955 *	OPEN	1/6	115	2.00	1500/3	10-1/2" x 1/2" x 10-1/2"	CWLE	MOT-1979, MOT-482
UE955 *	OPEN	1/6	115	2.30	1500/3	10-1/2" x 1/2" x 10-1/2"	DBL	MOT-1979, MOT-482
SS680 *	OPEN	1/8	115	1.50	775/3	11-1/2" x 1/2" x 11-1/2"	CCWLE	MOT-711
5FE1056S ●*	T.E.A.O.	1/2	575	1.20	1100	1/2" x 6-1/2"	REV.	D2752
5FE1054S ●*	T.E.A.O.	1/2	575	1.40	1625	1/2" x 6-1/2"	REV.	D2750
5FE1076S ●*	T.E.A.O.	3/4	575	1.90	1075	1/2" x 6-1/2"	REV.	D2753, MOT-2607
5BD1076 ●*	OPEN	3/4	575	2.30	1075/2	1/2" x 5.00"	REV.	F34575DD, 21A309661P01
5BD1106 ●*	OPEN	1	575	2.40	1075/2	1/2" x 5.00"	REV.	F1575DD, X70671181-017 X70671479-001
H955L ●	OPEN	3	575-3Ø	3.60	1800	7/8" x 2.30"	REV.	F31853, MOT-6769 MOT-9800
UEH955 ●	OPEN	3	575-3Ø	3.40	1800	7/8" x 2.30"	REV.	F31853, MOT-6769 MOT-9800
SS9193 ●*	OPEN	1	575	2.20	1075	5/8" x 5-31/32"	REV.	X70671655-01, MOT09193



York

Stock #	Encl.	HP	Volts	Amps.	RPM	Shaft	Rotation	Replaces
SS7738 ●*	T.E.A.O.	1/2	460	1.50	1075	1/2" x 6.00"	REV.	YCM124SD, 024-24100-002
OYK1056V1 *	T.E.A.O.	1/2	208-230	2.50	1090	1/2" x 4.00"	CWLE	024-24110-701, 713
5BD1076 ●*	OPEN	3/4	575	2.30	1075/2	1/2" x 5.00"	REV.	F34575DD, 024-31946-003
EM-2553 *	OPEN	1	460	3.30	1100/3	1/2" x 4.00"	REV.	YEFM1460, 024-21671-00024-21673-000
H953V1 ●	OPEN	2	575-3Ø	2.40	1800	7/8" x 2.30"	REV.	F21853, 024-19623-007
UEH953 ●	OPEN	2	575-3Ø	2.70	1725	7/8" x 2-1/4"	REV.	F21853, 024-19623-007
H955L ●	OPEN	3	575-3Ø	3.60	1800	7/8" x 2.30"	REV.	F31853, 024-19623-009
UEH955 ●	OPEN	3	575-3Ø	3.40	1800	7/8" x 2.30"	REV.	F31853, 024-19623-009

Features:

- Open Drip-Proof
- Single Phase & Three Phase
- Mounting Bracket
- 1800 RPM
- Permanently Sealed Ball Bearings
- Replacements for OEM Motors such as Armstrong (A), Bell & Gossett (B) & Taco (T)

Type '2A' 4.67" B.C.D. fits # 2 Bearing Assembly
 Type '2B' 5.00" B.C.D. fits # 3 & 4 Bearing Assembly
 Type '2C' 5.875" B.C.D. fits # 5, 6 & 7 Bearing Assembly



Type 2A & 2B



Type 2C



Type 2C

Single Phase

OMNIDRIVE®	Stock #	HP	Volts	Amps.	Type	Bearing	Rotation	Replaces
	SS1350	1/12	115	2.5	2A	BALL	CWSE	R1350
	SS1355	1/6	115	3.8	2A	BALL	CWSE	---
	SS1352	1/6	115	3.8	2B	BALL	CWSE	R1352
	SS1354	1/4	115	4.6	2B	BALL	CWSE	R1354
	SS1444	1/4	115	4.6	2C	BALL	CCWSE	R1444
	SS1356	1/3	115	6.0	2B	BALL	CWSE	R1356
	SS1446	1/3	115	6.0	2C	BALL	CCWSE	R1446
	SS1459	1/2	115-208/230	5.7/3.0-2.9	2C	BALL	REV.	R1459
	SS1462	3/4	115-208/230	8.2/4.7-4.2	2C	BALL	REV.	R1462
	C245^	1	230/115	6.5/13.0	4	BALL	REV.	R1463

(^) Round Body - No Bracket



Three Phase

OMNIDRIVE®	Stock #	HP	Volts	Amps.	Type	Bearing	Rotation	Replaces
	UEH1041	1/2	208-230/460	2.12-1.92/.96	3	Ball	REV.	R1368, H1041L
	UEH1046	1/2	575	0.77	3	Ball	REV.	R1369, H1046L
	UEH1042	3/4	208-230/460	2.94-2.66/1.33	3	Ball	REV.	R1370, H1042L
	UEH1047	3/4	575	1.06	3	Ball	REV.	R1372, H1047L
	UEH1043	1	208-230/460	3.23-2.92/1.46	3	Ball	REV.	R1371, H1043L
	UEH1048	1	575	1.17	3	Ball	REV.	R1373, H1048L
	UEH1044	1.5	208-230/460	4.72-4.27/2.14	3	Ball	REV.	R1374, H1044L
	UEH1049	1.5	575	1.71	3	Ball	REV.	R1375, H1049L

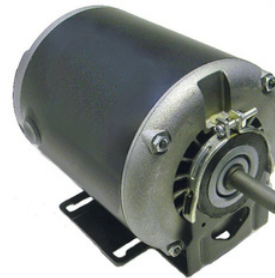


Features:

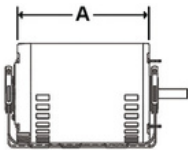
- Open Drip-Proof
- Class 'B' Insulation
- Reversible Rotation
- 60 Hz.
- Resilient Base
- Thermally Protected
- 1/2" to 5/8" Sleeve & Key Included
- Self-Aligning Sleeve & Sealed Ball Bearings



All US Motors Models



All OmniDrive Models



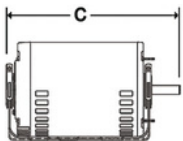
48 Frame - Single Speed

OMNIDRIVE®



Stock #	Encl.	HP	Volts	Amps.	RPM	"A" Dim.	Shaft	Rotation
SS933	OPEN	1/4	115	4.80	1725	6.81"	1/2" x 1.50"	REV.
SS934	OPEN	1/3	115	6.60	1725	6.81"	1/2" x 1.50"	REV.
SS935	OPEN	1/2	115	8.30	1725	7.76"	1/2" x 1.50"	REV.
SS933D ●	OPEN	1/4	115/208-230	4.60/2.20-2.10	1725	6.75"	1/2" x 1.88"	REV.
SS934D ●	OPEN	1/3	115/208-230	6.60/3.40-3.10	1725	6.75"	1/2" x 1.88"	REV.
SS935D ●	OPEN	1/2	115/208-230	7.60/3.70-3.80	1725	8.58"	1/2" x 1.88"	REV.
SS936D ●^	OPEN	3/4	115/208-230	11.60/5.90-5.80	1725	10.55"	5/8" x 1.88"	REV.

(^) 56 Frame



48 Frame - Single Speed



Stock #	Encl.	HP	Volts	Amps.	RPM	"C" Dim.	Shaft	Rotation
EM-840CV ●	OPEN	1/4	115	4.80	1725	9.40"	1/2" x 1.60"	REV.
EM-841CV ●	OPEN	1/3	115	6.40	1725	9.90"	1/2" x 1.60"	REV.
EM-1542C ●	OPEN	1/2	115	7.80	1725	9.90"	1/2" x 1.60"	REV.

56Z Frame - Two Speed

Stock #	Encl.	HP	Volts	Amps.	RPM	"C" Dim.	Shaft	Rotation
EM-5793C ●	OPEN	1/3	115	6.40	1725/1140	10.40"	1/2" x 1.50"	REV.
EM-5794C ●	OPEN	1/2	115	8.70	1725/1140	10.40"	1/2" x 1.50"	REV.
EM-5795C ●	OPEN	3/4	115	11.50	1725/1140	11.30"	1/2" x 1.50"	REV.

Features:

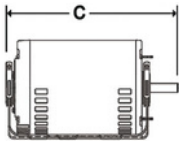
- Open Drip-Proof
- Class 'A' and 'B' Insulation
- Reversible Rotation
- Resilient Base
- 5/8" Diameter Shaft
- 40°C Ambient
- High Starting Torque
- Sleeve and Ball Bearings



All Century Models



All US Motors Models



56 Frame



Stock #	Encl.	HP	Volts	Amps.	RPM	"C" Dim.	Rotation
D13CA2JH9 •	O.D.P.	1/3	115 / 208-230	8.80 / 3.90 - 4.40	1725	9.80"	REV.
EM-1790 •	O.D.P.	1/3	115 / 208-230	7.40 / 3.70	1725	9.30"	REV.
EM-1893 •	O.D.P.	3/4	115 / 208-230	11.40 / 5.70	1725	10.80"	REV.
EM-3187C •	O.D.P.	1	115 / 230	14.00 / 7.00	1725	11.80"	REV.
EM-4242 •	O.D.P.	1-1/2	115 / 208-230	22.40 / 11.20	1725	12.80"	REV.



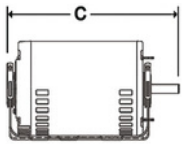
Cross Reference

Century	Rotom	Emerson	GE	Marathon	Fasco
C455	N/A	N/A	N/A	N/A	N/A
C403	S1120	180	C216	C216	D6082
C607	S1138	N/A	N/A	N/A	N/A
C412V1	S1146	1790	C1153		D6084
C654	S1168	N/A	N/A	N/A	N/A
C426V1	S1174	1893	C1156	B319	D6086
C692	N/A	N/A	N/A	N/A	N/A
C523V1	S1199	3187C	C1158	C1159	D6088
C621	S1336	4242	C1160	C1160	D6090



Features:

- Resilient Base and Rigid Base
- Reversible Rotation
- 5/8" Diameter Shaft
- Open Drip-Proof
- 40°C Ambient
- Ball Bearings



56 Frame



Stock #	HP	RPM	Volts	Amps.	Frame	Shaft Dia.	Base
H840	1/2	1800	460/200-230	1.00/1.9-2.0	56	5/8	Resilient
H940V1	1/2	1800	575	0.70	56	5/8	Resilient
UEH851	3/4	1800	208-230/460	2.9-2.9/1.5	56	5/8	Resilient
H941L	3/4	1800	575	0.90	56	5/8	Resilient
H842V1	1	3600	460/200-230	1.80/3.5-3.6	56H	5/8	Resilient
H950	1	3600	575	1.50	56H	5/8	Resilient
UEH852	1	1800	208-230/460	4.3/2.2	56H	5/8	Resilient
H942	1	1800	575	1.50	56H	5/8	Resilient
H882	1	1800	460/200-230	2.00/3.70-4.0	56H	5/8	Rigid
H883	1	1800	460/200-230	1.90/3.5-3.8	56HZ	7/8	Rigid
H843V1	1.5	3600	460/200-230	2.30/4.70-4.6	56H	5/8	Resilient
H944	1.5	3600	575	1.80	56H	5/8	Resilient
UEH853	1.5	1800	208-230/460	4.8-4.8/2.4	56H	5/8	Resilient
H943V1	1.5	1800	575	2.00	56	5/8	Resilient
UEH951	1.5	1800	575	2.00	56HZ	7/8	Rigid
UEH884	1.5	1800	208-230/460	4.8/2.4	56H	5/8	Rigid
UEH885	1.5	1800	200-230/460	5.00/2.50	56HZ	7/8	Rigid
H951V1	1.5	1800	575	2.00	56HZ	7/8	Rigid
H844	2	3600	460/200-230	2.90/6.0-5.8	56H	5/8	Resilient
H952	2	3600	575	2.40	56H	5/8	Resilient
H854	2	1800	460/200-230	3.00/6.6-7.0	56HZ	7/8	Resilient
UEH886	2	1800	200-230/460	7.60-7.8/3.9	56HZ	7/8	Rigid
UEH953	2	1800	575	2.70	56HZ	7/8	Rigid
H845	3	3600	460/200-230	4.30/9.0-8.6	56HZ	7/8	Resilient
H954	3	3600	575	3.60	56HZ	7/8	Resilient
H980L*	3	1800	208-230/460	9.00-9.0/4.5	56Y	7/8	Rigid
H855L	3	1800	460/200-230	4.40/9.0-8.8	56HZ	7/8	Resilient
UEH887	3	1800	200-230/460	9.0-9.2/4.60	56HZ	7/8	Rigid
UEH955	3	1800	575	3.40	56HZ	7/8	Rigid
H847	5	3600	460/200-230	6.60/13.4-13.2	56HZ	7/8	Rigid
H956	5	3600	575	5.40	56HZ	7/8	Rigid
H979L*	5	1800	208-230/460	15.00/7.40	56Y	7/8	Rigid

Features:

- Open Drip-Proof
- Rigid Base
- Class 'F' Insulation - Class 'B' Rise at Service Factor
- Reversible Rotation
- 1.15 Sevice Factor
- F-1 Assembly
- Aluminum End-Shields with Steel Inserts
- Light Weight Rolled Steel Frame
- Suitable for use with Inverters (VFD)
- Double Shielded Bearings (140 - 280 Frame)
- Lifting Provisions (210 Frame & Up)
- Regreasable Bearings (180 Frame & Up)
- Ball Bearings
- Shaft Grounding Kits Available



42/36 Month Warranty *



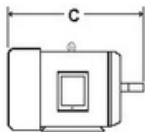
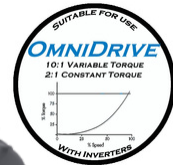
Three Phase

Stock #	HP	Volts	Amps.	RPM	Frame	Efficiency %
D1P2D	1	208-230/460	3.20/1.50	1800	143T	85.5
D32P2D	1-1/2	208-230/460	4.40/2.20	1800	145T	86.5
D2P2D	2	208-230/460	5.90/2.80	1800	145T	86.5
D3P2D	3	208-230/460	8.40-7.80/3.90	1800	182T	89.5
D5P2D	5	208-230/460	13.80-13.00/6.50	1800	184T	89.5
D7P2D	7-1/2	208-230/460	20.20-18.50/9.30	1800	213T	91.0
D10P2D	10	208-230/460	26.30-23.80/11.90	1800	215T	91.7
D15P2D	15	208-230/460	40.00-37.00/18.30	1800	254T	93.0
D20P2D	20	208-230/460	54.00-49.00/24.40	1800	256T	93.0
D25P2D	25	208-230/460	64.00-58.00/29.00	1800	284T	93.6
D30P2D	30	208-230/460	77.00-69.00/34.00	1800	286T	94.1
D1P2G	1	575	1.30	1800	143T	85.5
D32P2G	1-1/2	575	1.70	1800	145T	86.5
D2P2G	2	575	2.20	1800	145T	86.5
D3P2G	3	575	3.20	1800	182T	89.5
D5P2G	5	575	5.20	1800	184T	89.5
D7P2G	7-1/2	575	7.20	1800	213T	91.0
D10P2G	10	575	9.80	1800	215T	91.7
D15P2G	15	575	14.80	1800	254T	93.0
D20P2G	20	575	19.20	1800	256T	93.0
D25P2G	25	575	23.00	1800	284T	94.1
D30P2G	30	575	27.70	1800	286T	94.1

(* Note: Warranty Period is 42 Months from Date of Manufacture or 36 Months from Date of Installation on Sine Wave Power or 30 Months from Date of Manufacture or 24 Months from Date of Installation on VFD Power, whichever occurs rst.

Features:

- Aluminum Construction
- Totally Enclosed Fan Cooled
- **3600 RPM**
- Continuous Duty
- Class 'B' Insulation
- Removable Bolt-on Feet
- Reversible
- 40°C Ambient
- UL Listed & CSA Approved
- 3 Positions for Feet Allow for
- F-1, F-2, F-0 Conduit Box Location
- Inverter Duty 10:1 V.T. / 2:1 C.T.
- Ball Bearings
- 1.15 S.F.



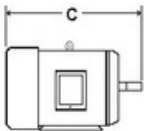
56 & 56HZ Frame



Stock #	HP	Volts	Amps.	"C" Dim	Shaft (Dia.)	Frame
WA631	1/3	208-230/460	1.26-1.14/0.57	12.67"	5/8	56
WA611	1/3	575	0.46	12.67"	5/8	56
WA632	1/2	208-230/460	1.82-1.64/0.82	12.67"	5/8	56
WA612	1/2	575	0.66	12.67"	5/8	56
WA633	3/4	208-230/460	2.59-2.34/1.17	12.67"	5/8	56
WA613	3/4	575	0.94	12.67"	5/8	56
WA634	1	208-230/460	3.24-2.92/1.46	13.66"	5/8	56H
WA614	1	575	1.17	13.66"	5/8	56H
TA624	1	208-230/460	3.24-2.92/1.16	14.02"	7/8	56HZ
TA604	1	575	1.17	14.02"	7/8	56HZ
WA635	1-1/2	208-230/460	4.71-4.26/2.13	13.66"	5/8	56H
WA615	1-1/2	575	1.70	13.66"	5/8	56H
TA625	1-1/2	208-230/460	4.71-4.26/2.13	14.02"	7/8	56HZ
TA605	1-1/2	575	1.70	14.02"	7/8	56HZ
WA636	2	208-230/460	6.02-5.44/2.72	13.66"	5/8	56H
WA616	2	575	2.18	13.66"	5/8	56H
TA626	2	208-230/460	6.02-5.44/2.72	14.02"	7/8	56HZ
TA606	2	575	2.18	14.02"	7/8	56HZ
WA637	3	208-230/460	8.76-7.92/3.96	13.66"	5/8	56H
WA617	3	575	3.17	13.66"	5/8	56H
TA627	3	208-230/460	8.70-7.96/3.96	14.02"	7/8	56HZ
TA607	3	575	3.17	14.02"	7/8	56HZ

Features:

- Aluminum Construction
- Totally Enclosed Fan Cooled
- **1800 RPM**
- Continuous Duty
- Class 'B' Insulation
- Removable Bolt-on Feet
- Reversible
- 40°C Ambient
- UL Listed & CSA Approved
- 3 Positions for Feet Allow for F-1, F-2, F-0 Conduit Box Location
- Inverter Duty 10:1 V.T. / 2:1 C.T.
- Ball Bearings
- 1.15 S.F.



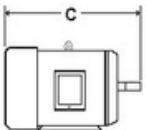
56 & 56HZ Frame

OMNIDRIVE®

Stock #	HP	Volts	Amps.	"C"	Shaft (Dia.)	Frame
WA681	1/3	208-230/460	1.43-1.30/0.65	12.67"	5/8"	56
WA661	1/3	575	0.52	12.67"	5/8"	56
WA682	1/2	208-230/460	2.12-1.92/0.96	12.67"	5/8"	56
WA662	1/2	575	0.77	12.67"	5/8"	56
WA683	3/4	208-230/460	2.94-2.66/1.33	12.67"	5/8"	56
WA663	3/4	575	1.06	12.67"	5/8"	56
WA684	1	208-230/460	3.84-3.48/1.74	13.66"	5/8"	56H
WA664	1	575	1.39	13.66"	5/8"	56H
TA674	1	208-230/460	3.84-3.48/1.74	14.02"	7/8"	56HZ
TA654	1	575	1.39	14.02"	7/8"	56HZ
WA685	1-1/2	208-230/460	5.28-4.78/2.39	13.66"	5/8"	56H
WA665	1-1/2	575	1.91	13.66"	5/8"	56H
TA675	1-1/2	208-230/460	5.28-4.78/2.39	14.02"	7/8"	56HZ
TA655	1-1/2	575	1.91	14.02"	7/8"	56HZ
WA686	2	208-230/460	6.73-6.08/3.04	13.66"	5/8"	56H
WA666	2	575	2.43	13.66"	5/8"	56H
TA676	2	208-230/460	6.73-6.08/3.04	14.02"	7/8"	56HZ
TA656	2	575	2.43	14.02"	7/8"	56HZ

Features:

- Aluminum Construction
- Totally Enclosed Fan Cooled
- **3600 RPM**
- Continuous Duty
- Class 'B' Insulation
- Removable Bolt-on Feet
- Reversible
- 40°C Ambient
- UL Listed & CSA Approved
- 3 Positions for Feet Allow for
- F-1, F-2, F-0 Conduit Box Location
- Inverter Duty 10:1 V.T. / 2:1 C.T.
- Ball Bearings
- 1.15 S.F.



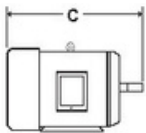
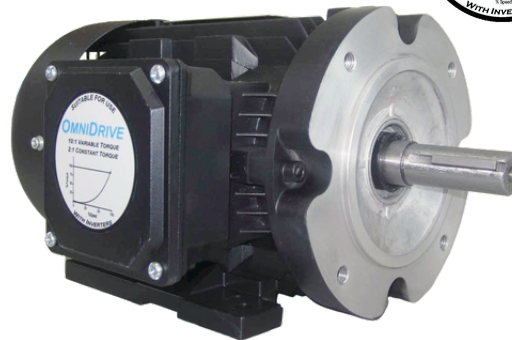
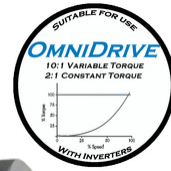
56 & 56HZ Frame

OMNIDRIVE®

Stock #	HP	Volts	Amps.	"C"	Shaft (Dia.)	Frame
WA631C	1/3	208-230/460	1.26-1.14/0.57	12.67"	5/8	56
WA611C	1/3	575	0.46	12.67"	5/8	56
WA632C	1/2	208-230/460	1.82-1.64/0.82	12.67"	5/8	56
WA612C	1/2	575	0.66	12.67"	5/8	56
WA633C	3/4	208-230/460	2.59-2.34/1.17	12.67"	5/8	56
WA613C	3/4	575	0.94	12.67"	5/8	56
WA634C	1	208-230/460	3.24-2.92/1.46	13.66"	5/8	56H
WA614C	1	575	1.17	13.66"	5/8	56H
TA624C	1	208-230/460	3.24-2.92/1.16	14.02"	7/8	56HZ
TA604C	1	575	1.17	14.02"	7/8	56HZ
WA635C	1-1/2	208-230/460	4.71-4.26/2.13	13.66"	5/8	56H
WA615C	1-1/2	575	1.70	13.66"	5/8	56H
TA625C	1-1/2	208-230/460	4.71-4.26/2.13	14.02"	7/8	56HZ
TA605C	1-1/2	575	1.70	14.02"	7/8	56HZ
WA636C	2	208-230/460	6.02-5.44/2.72	13.66"	5/8	56H
WA616C	2	575	2.18	13.66"	5/8	56H
TA626C	2	208-230/460	6.02-5.44/2.72	14.02"	7/8	56HZ
TA606C	2	575	2.18	14.02"	7/8	56HZ
WA637C	3	208-230/460	8.76-7.92/3.96	13.66"	5/8	56H
WA617C	3	575	3.17	13.66"	5/8	56H
TA627C	3	208-230/460	8.70-7.96/3.96	14.02"	7/8	56HZ
TA607C	3	575	3.17	14.02"	7/8	56HZ

Features:

- Aluminum Construction
- Totally Enclosed Fan Cooled
- **1800 RPM**
- Continuous Duty
- Class 'B' Insulation
- Removable Bolt-on Feet
- Reversible
- 40°C Ambient
- UL Listed & CSA Approved
- 3 Positions for Feet Allow for F-1, F-2, F-0 Conduit Box Location
- Inverter Duty 10:1 V.T. / 2:1 C.T.
- Ball Bearings
- 1.15 S.F.



56C & 56HCZ Frame



Stock #	HP	Volts	Amps.	"C"	Shaft (Dia.)	Frame
WA681C	1/3	208-230/460	1.43-1.30/0.65	12.67"	5/8"	56C
WA661C	1/3	575	0.52	12.67"	5/8"	56C
WA682C	1/2	208-230/460	2.12-1.92/0.96	12.67"	5/8"	56C
WA662C	1/2	575	0.77	12.67"	5/8"	56C
WA683C	3/4	208-230/460	2.94-2.66/1.33	12.67"	5/8"	56C
WA663C	3/4	575	1.06	12.67"	5/8"	56C
WA684C	1	208-230/460	3.84-2.48/1.74	13.66"	5/8"	56HC
WA664C	1	575	1.39	13.66"	5/8"	56HC
TA674C	1	208-230/460	3.84-2.48/1.74	14.02"	7/8"	56HCZ
TA654C	1	575	1.39	14.02"	7/8"	56HCZ
WA685C	1-1/2	208-230/460	5.28-4.78/2.39	13.66"	5/8"	56HC
WA665C	1-1/2	575	1.91	13.66"	5/8"	56HC
TA675C	1-1/2	208-230/460	5.28-4.78/2.39	14.02"	7/8"	56HCZ
TA655C	1-1/2	575	1.91	14.02"	7/8"	56HCZ
WA686C	2	208-230/460	6.73-6.08/3.04	13.66"	5/8"	56HC
WA666C	2	575	2.43	13.66"	5/8"	56HC
TA676C	2	208-230/460	6.73-6.08/3.04	14.02"	7/8"	56HCZ
TA656C	2	575	2.43	14.02"	7/8"	56HCZ



Features:

- Totally Enclosed Construction
- Cast Iron Construction
- Three Year Warranty
- Dual Mounting Holes
- Cast Iron Gasketed Conduit Box
- Double Lip Seal on Both Ends
- Class 'F' Insulation - Class 'B' Temp. Rise
- NEMA MG 1, EEMAC M1-6, CSA C390
- Double Sealed 'ZZ' Bearings up to (215T Frame)
- Standard (Non-Metric) Hardware
- F-2 Field Convertible
- Conduit Box can be Rotated 90 Degrees
- Ground Lug in Conduit Box
- Rust Preventative Treated Steel Fan Cover
- VPI Insulation System
- 'C' Face Kits Available
- 20:1 V.T. / 10:1 C.T.
- Inverter Duty
- Regreasable Bearings (254T Frame & Up)
- Oversized Ball Bearings



All Models



Three Phase

Stock #	HP	Volts	Volts	RPM	Frame	Efficiency %	C Face Kit
TCP657 •	3	575	3.10	1800	182T	87.5	CFP18
TCP658 •	5	575	5.20	1800	184T	87.5	CFP18
TCP659 •	7.5	575	7.50	1800	213T	89.5	CFP21
TCP65A •	10	575	10.00	1800	215T	89.5	CFP21
TCP65B •	15	575	14.00	1800	254T	91.0	CFP25
TCP65C •	20	575	19.60	1800	256T	91.0	CFP25
TCP65D •	25	575	23.60	1800	284T	92.4	CFP28
TCP65E •	30	575	28.30	1800	286T	92.4	CFP28
TCP65F •	40	575	37.00	1800	324T	93.0	CFP32
TCP65G •	50	575	46.30	1800	326T	93.0	CFP32
TCP677 •	3	208-230/460	7.4/3.7	1800	182T	87.5	CFP18
TCP678 •	5	208-230/460	12.2/6.1	1800	184T	87.5	CFP18
TCP679 •	7.5	208-230/460	18.2/9.1	1800	213T	89.5	CFP21
TCP67A •	10	208-230/460	24.2/12.1	1800	215T	89.5	CFP21
TCP67B •	15	208-230/460	35.8/17.9	1800	254T	91.0	CFP25
TCP67C •	20	208-230/460	47.4/23.7	1800	256T	91.0	CFP25
TCP67D •	25	208-230/460	57.6/28.8	1800	284T	92.4	CFP28
TCP67E •	30	208-230/460	69/34.5	1800	286T	91.0	CFP28

COMMANDER C

General Purpose drives AC Drive 0.33 HP - 200 HP (0.25kW - 132kW)
 0.33 hp – 150 hp (0.25 kW – 110 kW) Heavy Duty
 115 V | 208 - 240 V | 380 - 480 V | 575 V | 690 V

Commander C combines efficiency and reliability to offer optimum performance for a wide range of applications. With many essential features built in, including PLC capabilities for simple programming needs, dual STO safety function, braking transistor and PID control, it provides a compact solution for any installation.



COMMANDER S

General Purpose Micro AC Drive 0.25 to 5 HP (0.18 to 4 kW) 1 ϕ 115 & 208-230 V,
 3 ϕ 208-230 & 380-480 V

The Commander S series from Control Techniques offers a cost-effective solution for simple applications with its plug-and-play convenience. It features an innovative Marshal app interface for easy commissioning, monitoring, and diagnostics. The sleek design ensures easy installation and reliable performance, making it ideal for various motor control and energy-saving applications.



COMMANDER M

General Purpose AC Drive 0.33 hp – 200 hp (0.25 kW – 132 kW) Normal Duty
 0.33 hp – 150 hp (0.25 kW – 110 kW) Heavy Duty
 115 V | 208 - 240 V | 380 - 480 V | 575 V | 690 V

The Unidrive M400 VFD from Control Techniques minimizes downtime with a backlit LCD keypad for rapid setup and diagnostics. It features an integrated PLC for sequencing and logic programs, dual Safe Torque Off inputs, and flexible I/O options. The drive supports industry-standard fieldbus, Ethernet, and Modbus RTU communication.



KB - AC DRIVES, NEMA 1

HP Range: 1ph. and 3ph. 1/8- 5HP. 115, 208-230 Volts, 400/460 VAC-50/60HZ

The KB Nema 1 enclosure variable speed control for AC motor offers proven reliability in a rugged all-metal NEMA-1 enclosure. These drives range from 1/100 Hp. - 2 Hp., with both 115 and 230 Vac. inputs.



KB - AC DRIVES, NEMA 4X

HP Range: 1ph. and 3ph. 1/8- 5HP. 115, 208-230 Volts, 400/460 VAC-50/60HZ

KB's AC drives offer variable speed control for 3-phase AC Induction motors from 1/8 to 5 horsepower. They feature Sensorless Flux Vector Compensation with Static-Auto-Tune for excellent speed regulation and energy savings. The KBAC and KBDA series are housed in NEMA 4X / IP65 enclosures, suitable for both indoor and outdoor use. Available in white and grey.



KB - DC DRIVES, NEMA 1

HP Range: 1ph. 1/100 - 2HP, 3ph. 115 - 208/230 VAC - 50/60 HZ

The KB Nema 1 enclosed adjustable speed SCR control for DC motor offers proven reliability in a rugged all-metal NEMA-1 enclosure. These drives range from 1/100 Hp. - 2 Hp., with both 115 and 230 Vac. inputs.



KB - DC DRIVES, NEMA 4X (WASHDOWN)

HP Range: 1 - 5HP, 115-208/230V

KB's standard off-the-shelf DC Drives provide variable speed for DC motors from sub-fractional to 5 horsepower. Available in 115 and 208/230 VAC-50/60 Hz with 1Ø input, these NEMA 4X / IP65 drives are housed in a rugged die-cast aluminum enclosure with a hinged cover. Available in white and grey.



Fuji Electric

FRENIC MINI

HP Range: 1ph. 115V. 1/2 – 1HP, 1ph. 208/230V. 1/8 – 3HP, 3ph. 208/230V. 1/8 – 20HP, 460V. 1 – 20 HP

Fuji Electric's new compact inverter FRENIC-Mini (C2) Series provides excellent performance for both single-phase and three-phase applications and is available in multiple configurations to support 1/8 HP up to 20 HP AC drives / variable frequency drives (VFD) / v/ Hz vector drives. With an expanded range of rated voltages, the new FRENIC-Mini (C2) strikes an optimal balance between price and performance.



FRENIC ACE

HP Range: 1ph. 208/230V. 1/8 – 3HP, 3ph. 208/230V. 1/4 – 40HP, 460V. 1 – 40 HP

Ideal for OEMs, the FRENIC-Ace is a high-performance, full-featured Drive designed to suit a wide variety of applications. The FRENIC-Ace offers advanced integration capabilities including applied power ratings, sensor-less dynamic torque vector control, PM synchronous motor control, 2-channel on-board RS485 communication port, and customer customizable logic.



FRENIC ECO

HP Range: 208/230V. 1 – 125HP, 460V. 1 – 900 HP

Fuji Electric's FRENIC-Eco series is environmentally friendly by helping to significantly reduce energy use. The drives feature a small footprint for tight installations, network compatibility, and long-term reliability for three-phase applications, ranging from 1 HP up to 900 HP. These high performance AC drives / variable frequency drives (VFD) / v/ Hz vector drives are optimized for HVAC applications, such as chillers, air handlers, and fan coils.



Fuji Electric

FRENIC MEGA

HP Range: 208/230V. 1/2 – 150HP, 460V. 1/2 – 1000 HP

Fuji Electric has raised the bar for inverter performance with the FRENIC-MEGA variable drive. Offering expanded power ratings and flexible configurations that support 1/2 HP up to 1,000 HP AC drive/variable frequency drive (VFD) / v/ Hz vector drive applications – these inverters are designed for long lifecycles and improved maintenance functions.



FRENIC HVAC

HP Range: 208/230V. 1 – 125HP, 460V. 1 – 1000 HP, 575V. 1 – 300 HP

Fuji Electric's new low voltage FRENIC-HVAC series are slim-type inverters designed for energy savings and optimal control of fan and pump applications. These inverters have key features such as a real time clock, PID (4) controls, torque vector control, removable keypad, fire mode, and filter clogging prevention functions. Reduce cost and power consumption with the high-performance FRENIC-HVAC.



MORE MOTOR KNOWLEDGE... MORE MOTOR EXPERIENCE... MORE MOTOR VARIETY... AT YOUR SERVICE

WE'VE ALSO GOT YOU COVERED FOR:



UNIT BEARING MOTORS



ECM REFRIGERATION MOTORS



DC MOTORS



COMPRESSOR DUTY MOTORS



PUMP MOTORS



GENERAL PURPOSE MOTORS (IHP)



ELEVATOR DUTY MOTORS



FARM DUTY MOTORS



MORE DEM REPLACEMENT MOTORS



MORE BLOWERS



MORE 3.3" DIAMETER MOTORS



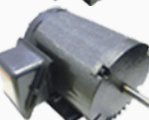
MORE 4" DIAMETER MOTORS



MORE 5" DIAMETER MOTORS



MORE 48 FRAME MOTORS



MORE 56 FRAME MOTORS



MORE SKELETON MOTORS

INTEGRITY OF CATALOG: The information contained in this catalogue is for reference purposes only. We strive to ensure that the information is as accurate and current as possible. We are in no way responsible for any errors that may arise. We reserve the right to change specifications and other information included without prior notice. If you are concerned about the validity of the information on a certain product, please visit www.ue.com and contact us.

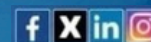
DISCLAIMER: All content offered from or available in our catalogue are provided to you on an "as is" basis, without representations, warranties or conditions of any kind. You acknowledge and agree that any reliance by you on any information available in this catalogue shall be at your own risk.

All rights reserved. You may not produce, copy, modify or redistribute the design or layout of any Universal Electric Motors content without written permission.

It is important to note that Universal Electric Motors is not affiliated with any of the original equipment manufacturers or their brands which may be referred to herein. Other trade-marks featured in this catalogue are the property of their respective owners. No association between Universal Electric Motors and any trademark holder is expressed or implied. The names, descriptions, numbers and symbols featured throughout this catalogue are for cross reference purposes only.

June 2024

WE DO MOTORS BEST.



© Universal Electric Motors. All Rights Reserved.

www.universalelectricmotors.com